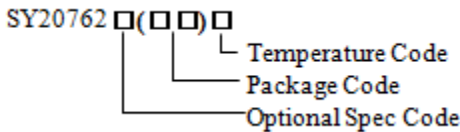


### General Description

SY20762E1 is a 3.6-5.5V<sub>IN</sub>, 2A two-cell synchronous boost Li-Ion battery charger integrates 1MHz switching frequency and full protection functions. The charge current up to 2A can be programmed by using the external resistor for different portable applications and indicates the charger current information simultaneous. It also has a programmable charge timeout for safety battery charge operation and a programmable input voltage threshold for adaptive input current limit. SY20762E1 can disconnect output when there is output short circuit or shutdown happens. It consists of 18V rating FETs with extremely low ON resistance to achieve high charge efficiency and simple peripheral circuit design.

SY20762E1 along with small QFN3x3 footprint provides small PCB area application.

### Ordering Information



Ordering Number	Package type	Note
SY20762E1QDC	QFN3x3-16	

### Features

- Low Profile QFN3x3 Package
- Integrated Synchronous Boost with 18V Rating Low R<sub>DS(ON)</sub> FETs for High Charge Efficiency
- Trickle Current / Constant Current / Constant Voltage Charge Mode
- Programmable Input Voltage Threshold for Adaptive Current Limit.
- Maximum 2A Constant Charge Current
- Charge Current Information Indication.
- Programmable Charge Timeout
- Programmable Constant Charge Current
- Selectable Constant Voltage
- ±0.5% Battery Voltage Accuracy
- Thermal Regulation Protection
- External Shutdown Function
- Input Voltage UVLO and OVP
- Over Temperature Protection
- Output Short Circuit Protection
- Charge Status Indication
- Normal Synchronous Boost Operation When Battery Removed

### Applications

- Cellular Telephones, PDA, MP3 Players, MP4 Players
- Digital Cameras
- Bluetooth Applications
- PSP Game Players, NDS Game Players
- Notebook

### Typical Applications

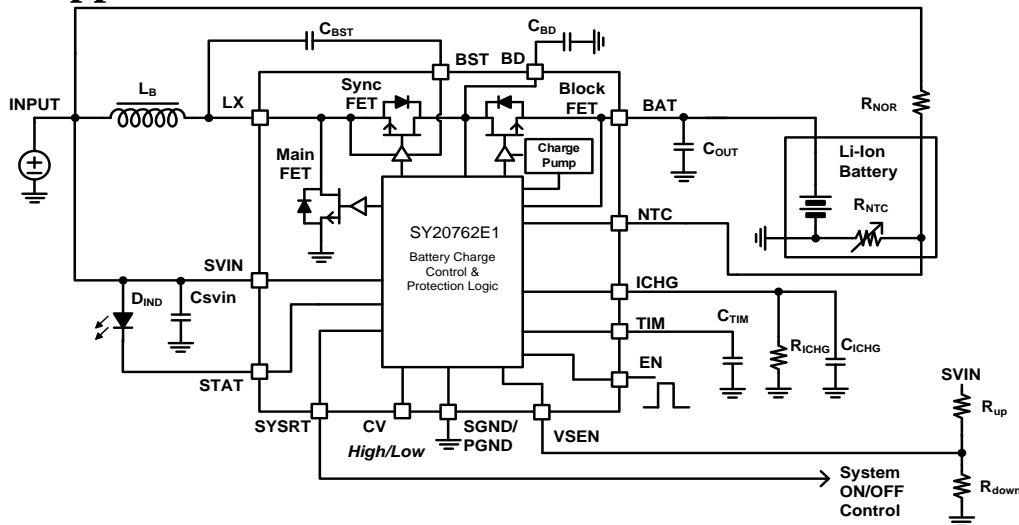
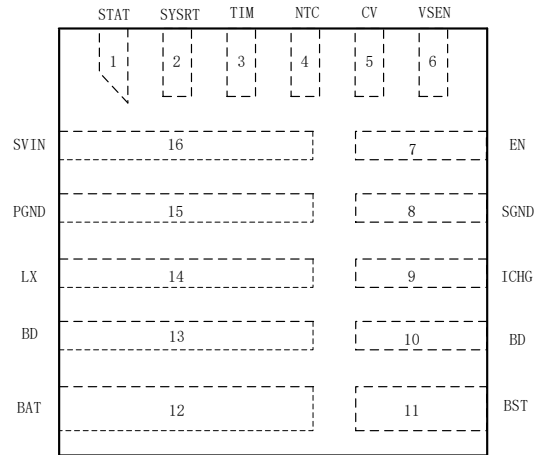


Figure1. Schematic Diagram

## Pinout (top view)



(QFN3x3-16)

Top Mark: **BMU**<sub>xyz</sub>, (Device code: BMU, *x*=year code, *y*=week code, *z*= lot number code)

Name	Pin Number	Description
STAT	1	Charge status indication pin. It is open drain output pin and pull high to SVIN thru a LED to indicate the charge in process. When the charge is done, LED is off.
SYSRT	2	System ON/OFF control pin. When $V_{BAT}$ is lower than 6V, SYSRT pin outputs low logic to turn off the system operation; when $V_{BAT}$ is high than 6V, SYSRT pin outputs high logic to turn on the system operation.
TIM	3	Charge time limit pin. Connect this pin with a capacitor to ground. Internal current source charge the capacitor for TC mode and CC mode's charge time limit. TC charge time limit is about 1/9 of CC charge time.
NTC	4	Thermal protection pin. UTP threshold is typical 75% $V_{SVIN}$ and OTP threshold is typical 30% $V_{SVIN}$ . Pull up to SVIN can disable charge logic and make the IC operate as normal boost regulator. Pull down to ground can shutdown the IC.
CV	5	Battery CV voltage selection pin. Program 2 different CV thresholds by setting different voltage on the pin. The detailed information is shown in description section.
VSEN	6	Voltage sense of SVIN. If the voltage drops to internal 1.195V reference voltage, the SVIN will be clamped to setting value and input current will be limited.
EN	7	Enable control pin. High logic for enable on, and low logic for enable off.
SGND	8	Signal ground pin.
ICHG	9	Charge current program pin, pull down to GND with a Resistor $R_{ICHG}$ . The mirror current about 1/10000 of the blocking FET current will dump into the external RC network thru ICHG pin and compared to the internal reverence 1V. So $I_{CC}=(1V/ R_{ICHG})\times 10000$ , $I_{TC}=(1V/ R_{ICHG})\times 1000$ .
BD	10, 13	Connect to the Drain of internal Blocking FET. Bypass at least 4.7uF ceramic cap to GND.
BST	11	Boost-Strap pin. Supply Rectified FET's gate driver. Decouple this pin to LX with 0.1uF ceramic cap.
BAT	12	Battery positive pin.
LX	14	Switch node pin. Connect to external inductor.
PGND	15	Power ground pin.
SVIN	16	Analog power input pin. Connect a MLCC from this pin to ground to decouple high harmonic noise. This pin has OVP and UVLO function to make the charger operate within safe input voltage area.



## Absolute Maximum Ratings

STAT, NTC, CV, VSEN, EN, ICHG, BD, BAT, LX, SVIN	18V
SYSRT, TIM, BST-LX	4V
LX Pin current continuous	5A
Power Dissipation, $P_D$ @ $T_A = 25^\circ\text{C}$ , QFN3x3	2.6W
Package Thermal Resistance	
$\theta_{JA}$	38°C/W
$\theta_{JC}$	4°C/W
Junction Temperature Range	-40°C to +125°C
Lead Temperature (Soldering, 10 sec.)	260°C
Storage Temperature Range	-65°C to 125°C

## Recommended Operating Conditions

SVIN	3.6V to 5.5V
STAT, NTC, CV, VSEN, EN, ICHG, BD, BAT, LX	-0.3V to 16V
SYSRT, TIM, BST-LX	-0.3V to 3.3V
LX Pin current continuous	5A
Junction Temperature Range	-40°C to 125°C
Ambient Temperature Range	-40°C to 85°C



## Electrical Characteristics

T<sub>A</sub>=25°C, V<sub>IN</sub>=5V, GND=0V, C<sub>IN</sub>=4.7uF, L=0.68uH, R<sub>CHG</sub>=10kΩ, C<sub>TIM</sub>=470nF, unless otherwise specified.

Symbol	Parameter	Conditions	Min	Typ	Max	Unit
<b>Bias Supply (V<sub>SVIN</sub>)</b>						
V <sub>SVIN</sub>	Supply voltage		3.6		16	V
V <sub>UVLO</sub>	V <sub>SVIN</sub> under voltage lockout threshold	V <sub>SVIN</sub> rising and measured from V <sub>SVIN</sub> to GND			3.6	V
ΔV <sub>UVLO</sub>	V <sub>SVIN</sub> under voltage lockout hysteresis	Measured from V <sub>SVIN</sub> to GND		100		mV
V <sub>OVP</sub>	Input overvoltage protection	V <sub>SVIN</sub> rising and measured from V <sub>SVIN</sub> to GND	5.8			V
ΔV <sub>OVP</sub>	Input overvoltage protection hysteresis	Measured from V <sub>SVIN</sub> to GND		0.5		V
<b>Quiescent Current</b>						
I <sub>BAT</sub>	Battery discharge current	Shutdown IC, EN=NTC=0			10	uA
I <sub>IN</sub>	Input quiescent current	Disable Charge, EN=1,NTC=0			1.5	mA
<b>Oscillator and PWM</b>						
f <sub>SW</sub>	Switching frequency			1000		kHz
T <sub>MINOFF</sub>	Main N-FET minimum off time	With 18V rating		100		ns
T <sub>MAXOFF</sub>	Main N-FET maximum off time	With 18V rating		30		us
T <sub>MINON</sub>	Main N-FET minimum on time	With 18V rating		100		ns
<b>Power MOSFET</b>						
R <sub>NFET_M</sub>	R <sub>DS(ON)</sub> of Main N-FET			80		mΩ
R <sub>NFET_R</sub>	R <sub>DS(ON)</sub> of Rectified N-FET			40		mΩ
R <sub>NFET_B</sub>	R <sub>DS(ON)</sub> of Blocking N-FET			40		mΩ
<b>Voltage Regulation</b>						
V <sub>CV</sub>	2-Cell CV charge mode voltage	V <sub>CV</sub> <1V	8.457	8.5	8.542	V
		V <sub>CV</sub> >2V	8.756	8.8	8.844	
V <sub>CVH</sub>	High level logic for CV		2			V
V <sub>CVL</sub>	Low level logic for CV				1	V
ΔV <sub>RCH</sub>	2-Cell Recharge Voltage		100	200	300	mV
V <sub>TRK</sub>	2-cell TC charge mode battery voltage threshold	Rising edge threshold	5.4	5.6	5.8	V
<b>Battery Connect Detection</b>						
V <sub>DET</sub>	NTC voltage threshold for Battery detect	NTC Falling Edge	85%		95%	V <sub>SVIN</sub>
t <sub>DET</sub>	Detect delay time			30		
<b>Charge Current</b>						
	Internal charge current accuracy for Constant Current Mode	I <sub>CC</sub> =1000mA	-10%		10%	
	Internal charge current accuracy for Trickle Current Mode	I <sub>TC</sub> =100mA	-50%		50%	
I <sub>TERM</sub>	Termination current	I <sub>CC</sub> =1000mA	50	100	150	mA
<b>Output Voltage OVP</b>						
V <sub>OVP</sub>	Output voltage OVP threshold		105%	110%	115%	V <sub>CV</sub>
<b>Input Voltage Threshold for Adaptive Current Limit</b>						
V <sub>Threshold</sub>	Voltage reference of VSEN		1.176	1.2	1.224	V
<b>Timer</b>						



T <sub>TC</sub>	Trickle current charge timeout	C <sub>TIM</sub> =330nF	0.23	0.5	0.67	hour
T <sub>CC</sub>	Constant current charge timeout		3.0	4.5	6	hour
T <sub>MC</sub>	Charge mode change delay time			30		ms
T <sub>TERM</sub>	Termination delay time			30		ms
T <sub>RCHG</sub>	Recharge time delay			30		ms
<b>Short Circuit Protection</b>						
V <sub>SHORT</sub>	Output short protection threshold		1.70	2.00	2.30	V
<b>System ON/OFF Control</b>						
V <sub>HSYSRT</sub>	High logic of system ON/OFF control		2.1			V
V <sub>LSYSRT</sub>	Low logic of system ON/OFF control				0.6	V
<b>Linear charger Mode</b>						
I <sub>LCHG</sub>	Battery Charger current when the blocking FET is in linear mode	V <sub>BAT</sub> <V <sub>SHORT</sub>		5%		I <sub>CC</sub>
V <sub>BD</sub>	Bus voltage regulation		5.8	6	6.2	V
V <sub>TRON</sub>	Blocking FET fully turn on threshold V <sub>TRON</sub> =V <sub>BAT</sub> -V <sub>IN</sub>	V <sub>BAT</sub> > V <sub>TRK</sub>		100		mV
<b>Enable ON/OFF Control</b>						
V <sub>ENH</sub>	High level logic for enable control		1.5			V
V <sub>ENL</sub>	Low level logic for enable control				0.4	V
<b>Battery Thermal Protection NTC</b>						
UTP	Under temperature protection		70%	75%	80%	V <sub>SVIN</sub>
	Under temperature protection hysteresis	Falling edge		5%		
OTP	Over temperature protection		28%	30%	32%	
	Over temperature protection hysteresis	Rising edge		2%		
<b>Thermal Regulation And Thermal shutdown</b>						
T <sub>REG</sub>	Thermal regulation threshold	Rising Threshold		120		°C
T <sub>REGHYS</sub>	Thermal regulation hysteresis falling edge			20		°C
	Thermal regulation fold back ratio			0.25		I <sub>CC</sub>
T <sub>SD</sub>	Thermal shutdown temperature	Rising Threshold		160		°C
T <sub>SDHYS</sub>	Thermal shutdown temperature hysteresis			30		°C

**Note 1:** Stresses beyond the “Absolute Maximum Ratings” may cause permanent damage to the device. These are stress ratings only. Functional operation of the device at these or any other conditions beyond those indicated in the operational sections of the specification is not implied. Exposure to absolute maximum rating conditions for extended periods may affect device reliability.

**Note 2:**  $\theta_{JA}$  is measured in the natural convection at T<sub>A</sub> = 25°C on a low effective four-layer thermal conductivity test board of JEDEC 51-3 thermal measurement standard.

**Note 3:** The device is not guaranteed to function outside its operating conditions



## General Function Description

SY20762E1 is a 3.6-5.5V<sub>IN</sub>, 2A two-cell synchronous boost Li-Ion battery charger integrates 1MHz switching frequency and full protection functions. The charge current up to 2A can be programmed by using the external resistor for different portable applications and indicates the charger current information simultaneous. It also has a programmable charge timeout for safety battery charge operation and a programmable input voltage threshold for adaptive input current limit. SY20762E1 can disconnect output when there is output short circuit or shutdown happens. It consists of 18V rating FETs with extremely low ON resistance to achieve high charge efficiency and simple peripheral circuit design.

## Charging Status Indication Description

1. Charge-In-Process – Pull and keep STAT pin to Low;
2. Charge Done – Pull and keep STAT pin to High;
3. Fault Mode – Output high and low voltage alternatively with 1.3Hz frequency. Connect a LED from SVIN to STAT pin, LED ON means Charge-in-Process, LED OFF means Charge Done, LED Flashing with 1.3HZ means Fault Mode.

## Switching Mode Boost Charger Basic Operation Description

### Switching Mode Control Strategy

SY20762E1 is a switching mode Boost charger for the applications with USB power input. The 1MHz fixed frequency is easy for the size minimization of peripheral circuit design.

### Operation Principle

SY20762E1 can normally work with or without Li-Ion battery both.

### Battery Present

When the battery is present, SY20762E1 will works on trickle charging, constant current charging and constant voltage charging mode according to the battery voltage.

### Battery Absent

If there's no battery connection detected thru NTC pin, SY20762E1 operates as a normal switching mode boost converter. The internal constant current loop and voltage loop are active both.

### Basic Protection Principle

SY20762E1 has fully battery charging protection. When the input over voltage protection, the output over voltage protection, the thermal protection or the timeout protection happens, the boost charger stops switching immediately. When the V<sub>BAT</sub> is lower than V<sub>SHORT</sub>, the short circuit protection happens. The main FET is turned off firstly. The block FET enters linear mode with 1/20 I<sub>CC</sub> charging current. When V<sub>BAT</sub> recovers back to be higher than V<sub>SHORT</sub>, the boost charger restarts to work at light load and regulates V<sub>BD</sub> at 6V. The linear charge current is increased from 1/20 I<sub>CC</sub> to 1/10 I<sub>CC</sub>. When V<sub>BAT</sub> recovers back to be higher than V<sub>SVIN</sub>, the boost switching charger takes over.

### Adaptive Input Current Limit Principle

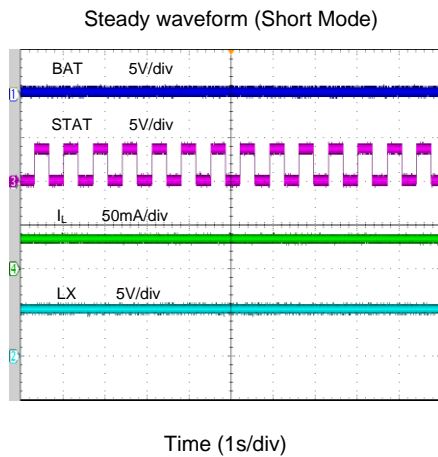
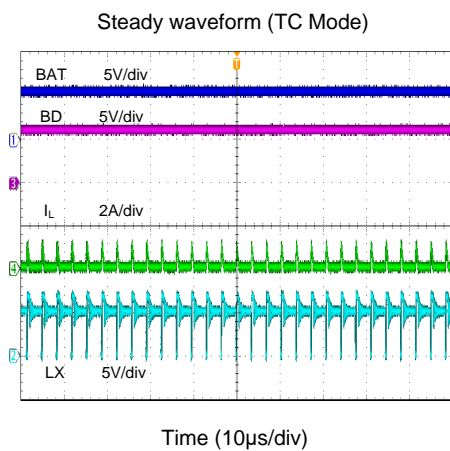
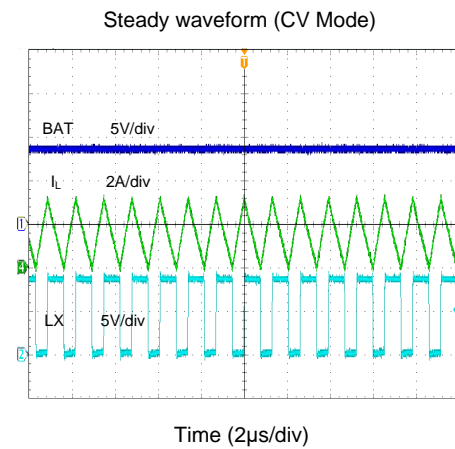
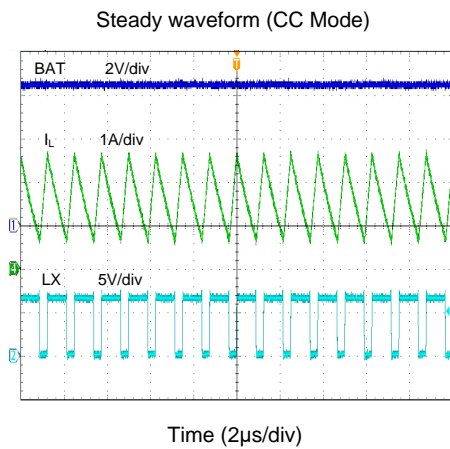
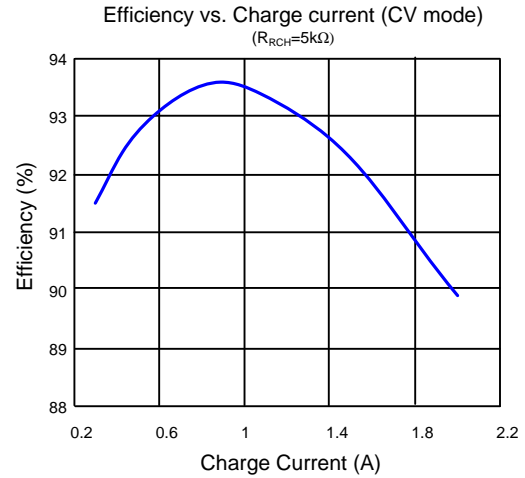
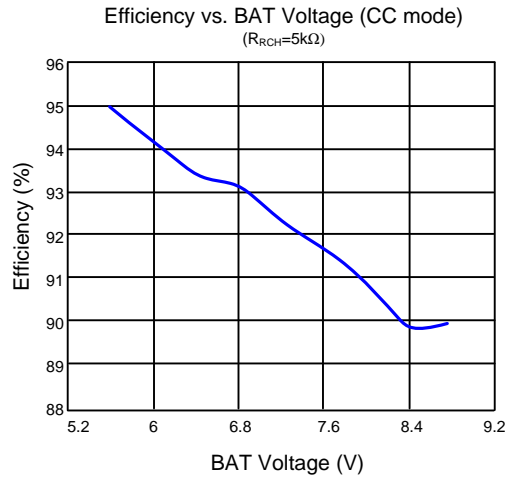
SY20762E1 can protect the input DC source from over load by the special loop control. The high charging current will caused a voltage drop at SVIN when the input DC source is over load. When V<sub>SEN</sub> drops below the internal 1.195V reference, SY20762E1 will decrease the duty cycle to reduce the charging current.

### Constant Voltage Threshold Program Principle

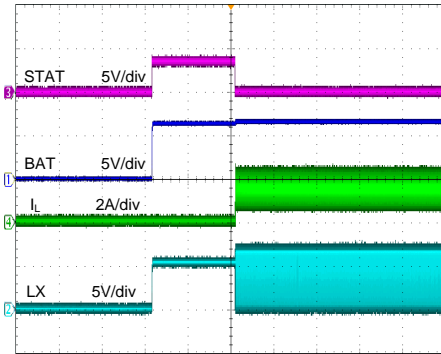
SY20762E1 can program the constant voltage threshold thru the CV pin. When V<sub>CV</sub> is higher than 2V, the constant voltage threshold is 8.8V; when V<sub>CV</sub> is lower than 1V, the constant voltage threshold is 8.5V.

## Typical Performance Characteristics

( $T_A=25^{\circ}\text{C}$ ,  $V_{IN}=5\text{V}$ ,  $R_{RCH}=10\text{k}\Omega$ , unless otherwise specified. )

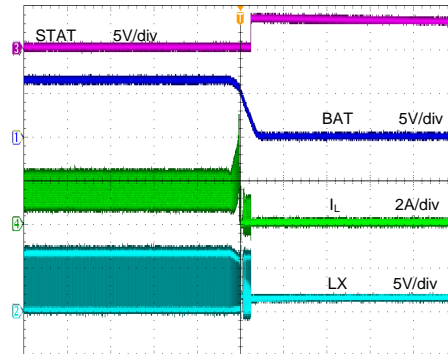


Power On (CC Mode)



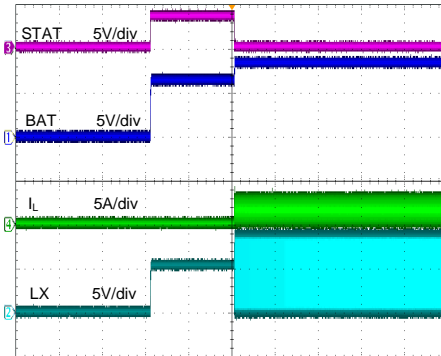
Time (400ms/div)

Power Off (CC Mode)



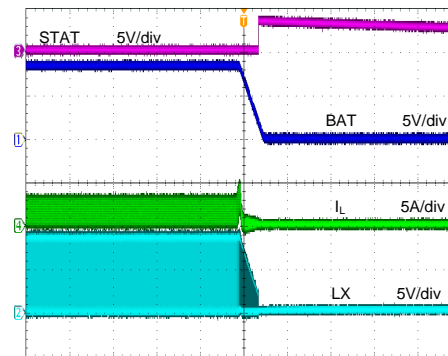
Time (2ms/div)

Power On (CV Mode)



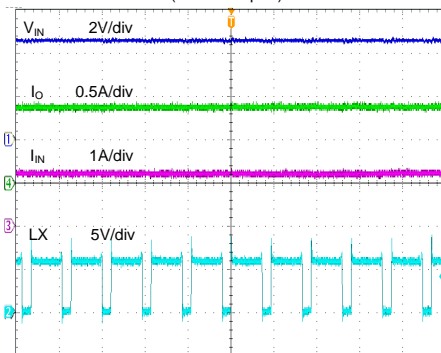
Time (400ms/div)

Power Off (CV Mode)



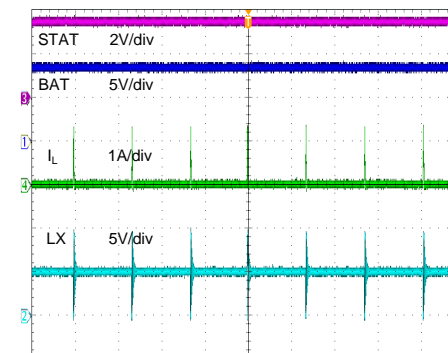
Time (4ms/div)

Adaptive input current limit  
(5V/1A adapter)



Time (1μs/div)

Boost Mode (Null load)



Time (20μs/div)

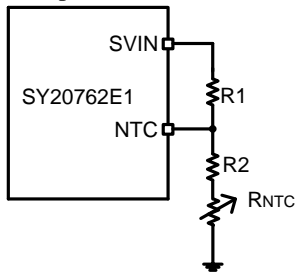
## Applications Information

Because of the high integration of SY20762E1, the application circuit based on this regulator IC is rather simple. Only input capacitor  $C_{IN}$ , output capacitor  $C_{OUT}$ , inductor L, NTC resistors R1,R2, input voltage threshold resistors  $R_{up}$ ,  $R_{down}$  and timer capacitor  $C_{TIM}$  need to be selected for the targeted applications specifications.

### NTC resistor:

SY20762E1 monitors battery temperature by measuring the input voltage and NTC voltage. The controller triggers the UTP or OTP when the rate K ( $K = V_{NTC}/V_{SVIN}$ ) reaches the threshold of UTP ( $K_{UT}$ ) or OTP ( $K_{OT}$ ). The temperature sensing network is showed as below.

Choose R1 and R2 to program the proper UTP and OTP points.



The calculation steps are:

1. Define  $K_{UT}$ ,  $K_{UT} = 70 \sim 80\%$
2. Define  $K_{OT}$ ,  $K_{OT} = 28 \sim 32\%$
3. Assume the resistance of the battery NTC thermistor is  $R_{UT}$  at UTP threshold and  $R_{OT}$  at OTP threshold.
4. Calculate R2,

$$R2 = \frac{K_{OT}(1 - K_{UT})R_{UT} - K_{UT}(1 - K_{OT})R_{OT}}{K_{UT} - K_{OT}}$$

5. Calculate R1

$$R1 = (1/K_{OT} - 1)(R2 + R_{OT})$$

If choose the typical values  $K_{UT} = 75\%$  and  $K_{OT} = 30\%$ , then

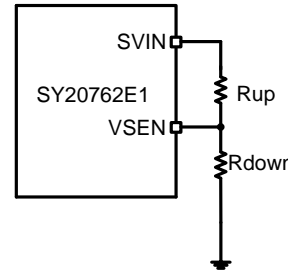
$$R2 = 0.17 R_{UT} - 1.17 R_{OT}$$

$$R1 = 2.3(R2 + R_{OT})$$

### Input Voltage Threshold VSEN for Adaptive Current Limit.

SY20762E1 monitors input voltage by measuring the VSEN voltage, when VSEN drops below the internal 1.195V reference, SY20762E1 will decrease the duty cycle to reduce the charging current.

The input voltage sense network shows below, choose  $R_{up}$ ,  $R_{down}$  to set the input voltage threshold  $V_{INT}$  :



$$V_{INT} = \frac{V_{SEN} * (R_{down} + R_{up})}{R_{down}}$$

Unit:V

$V_{SEN}$  is 1.195V.

### Timer capacitor $C_{TIM}$

The charger also provides a programmable charge timer. The charge time is programmed by the capacitor connected between the TIM pin and GND. The capacitance is given by the formula:

$$C_{TIM} = 2 * 10^{-11} T_{CC}$$

Unit:F

$T_{CC}$  is the target constant charge time, unit: s.

### Input capacitor $C_{IN}$ :

The ripple current through input capacitor is greater than

$$I_{CIN\_RMS} = \frac{V_{IN} * (V_{OUT} - V_{IN})}{2\sqrt{3} * L * F_{SW} * V_{OUT}}$$

X5R or X7R ceramic capacitors with greater than 4.7uF capacitance are recommended to handle this ripple current.

### Output capacitor $C_{OUT}$ :

The output capacitor is selected to handle the output ripple noise requirements. This ripple voltage is related to the capacitance and its equivalent series resistance (ESR). For the best performance, it is recommended to use X5R or better grade low ESR ceramic capacitor. The voltage rating of the output capacitor should be higher than the maximum output voltage. The minimum required capacitance can be calculated as:

$$C_{OUT} = \frac{I_{CC} * (V_{OUT} - V_{IN})}{F_{SW} * V_{OUT} * V_{RIPPLE}}$$

$V_{RIPPLE}$  is the peak to peak output ripple,  $I_{CC}$  is the setting charge current.

For SY20762E1, output capacitor is paralleled by  $C_{BD}$  and  $C_{BAT}$ , for smaller output ripple noise, each

capacitor with greater than 10uF capacitance is recommended.

DCR<10mohm to achieve a good overall efficiency.

### Inductor L:

There are several considerations in choosing this inductor.

- 1) Choose the inductance to provide the desired ripple current. It is suggested to choose the ripple current to be about 40% of the average input current. The inductance is calculated as:

$$L = \left( \frac{V_{IN}}{V_{OUT}} \right)^2 \frac{(V_{OUT} - V_{IN})}{I_{CC} \times F_{SW} \times 40\%}$$

Where  $F_{SW}$  is the switching frequency and  $I_{CC}$  is the setting charge current.

The SY20762E1 is quite tolerant of different ripple current amplitude. Consequently, the final choice of inductance can be slightly off the calculation value without significantly impacting the performance.

- 2) The saturation current rating of the inductor must be selected to be greater than the peak inductor current under full load conditions.

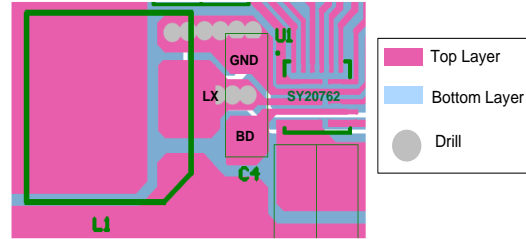
$$I_{SAT,MIN} > \left( \frac{V_{OUT}}{V_{IN}} \right) \times I_{CC} + \left( \frac{V_{IN}}{V_{OUT}} \right) \times \frac{(V_{OUT} - V_{IN})}{2 \times F_{SW} \times L}$$

- 3) The DCR of the inductor and the core loss at the switching frequency must be low enough to achieve the desired efficiency requirement. It is desirable to choose an inductor with

### Layout Design:

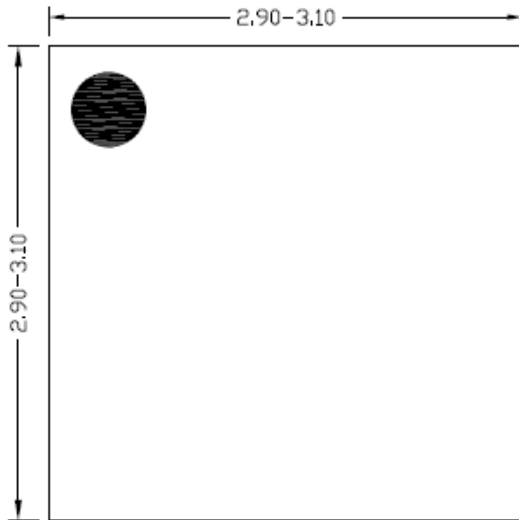
The layout design of SY20762E1 regulator is relatively simple. For the best efficiency and minimum noise problems, we should place the following components close to the IC:  $C_{SVIN}$ , L,  $C_{BD}$ .

- 1) The loop of main MOSFET, rectifier diode, and  $C_{BD}$  must be as short as possible

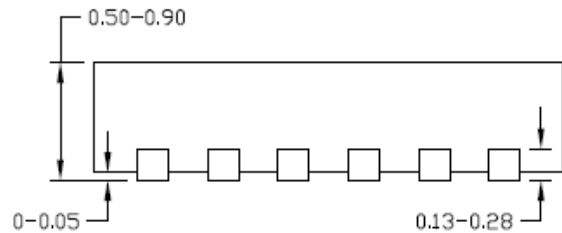


- 2) It is desirable to maximize the PCB copper area connecting to GND pin to achieve the best thermal and noise performance.
- 3)  $C_{SVIN}$  must be close to pin SVIN and GND.
- 4) The PCB copper area associated with LX pin must be minimized to avoid the potential noise problem.
- 5) The small signal components  $R_{ICHG}$ ,  $R_{up}$  and  $R_{down}$  must be placed close to IC and must not be adjacent to the LX net on the PCB layout to avoid the noise problem.

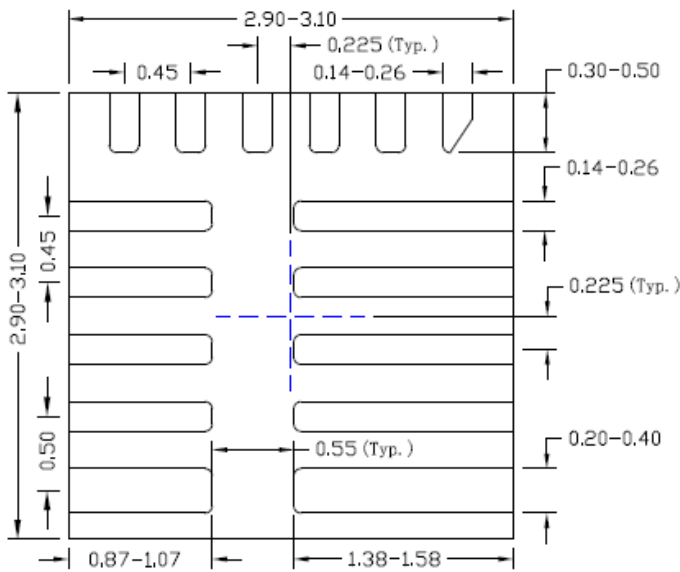
## QFN3x3-16 Package Outline Drawing



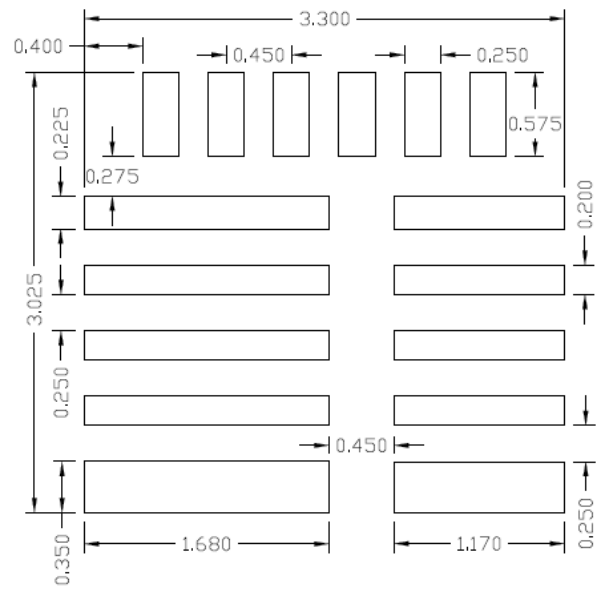
**Top View**



**Side View**



**Bottom View**



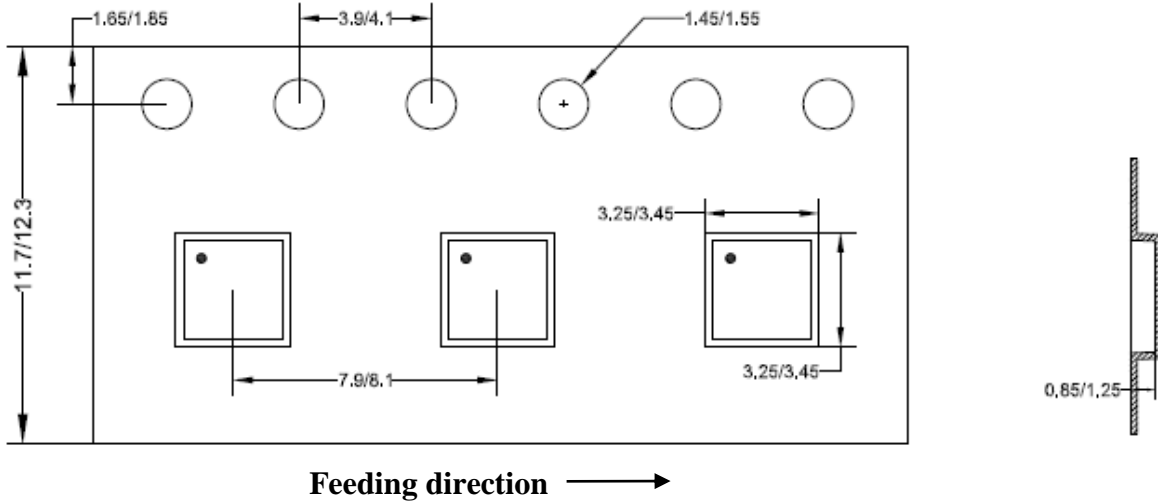
**Recommended PCB layout  
(Reference only)**

**Notes:** All dimension in millimeter and exclude mold flash & metal burr

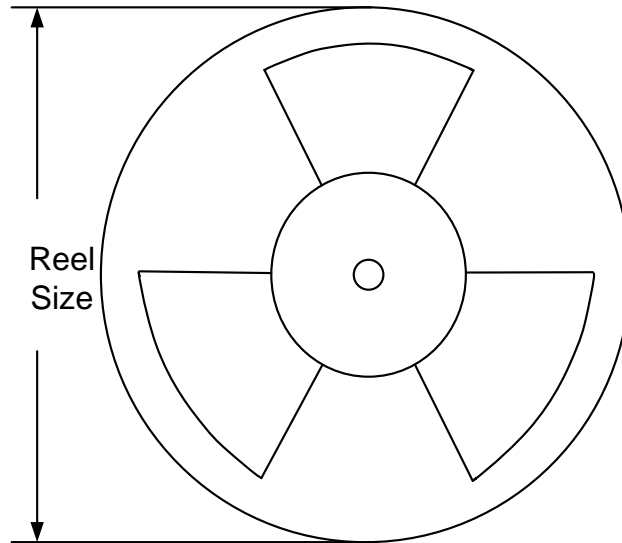
## Taping & Reel Specification

### 1. Taping orientation

QFN3x3



### 2. Carrier Tape & Reel specification for packages



Package type	Tape width (mm)	Pocket pitch(mm)	Reel size (Inch)	Trailer length(mm)	Leader length (mm)	Qty per reel
QFN3x3	12	8	13"	400	400	5000

### 3. Others: NA



## IMPORTANT NOTICE

- 1. Right to make changes.** Silergy and its subsidiaries (hereafter Silergy) reserve the right to change any information published in this document, including but not limited to circuitry, specification and/or product design, manufacturing or descriptions, at any time and without notice. This document supersedes and replaces all information supplied prior to the publication hereof. Buyers should obtain the latest relevant information before placing orders and should verify that such information is current and complete. All semiconductor products are sold subject to Silergy's standard terms and conditions of sale.
- 2. Applications.** Application examples that are described herein for any of these products are for illustrative purposes only. Silergy makes no representation or warranty that such applications will be suitable for the specified use without further testing or modification. Buyers are responsible for the design and operation of their applications and products using Silergy products. Silergy or its subsidiaries assume no liability for any application assistance or designs of customer products. It is customer's sole responsibility to determine whether the Silergy product is suitable and fit for the customer's applications and products planned. To minimize the risks associated with customer's products and applications, customer should provide adequate design and operating safeguards. Customer represents and agrees that it has all the necessary expertise to create and implement safeguards which anticipate dangerous consequences of failures, monitor failures and their consequences, lessen the likelihood of failures that might cause harm and take appropriate remedial actions. Silergy assumes no liability related to any default, damage, costs or problem in the customer's applications or products, or the application or use by customer's third-party buyers. Customer will fully indemnify Silergy, its subsidiaries, and their representatives against any damages arising out of the use of any Silergy components in safety-critical applications. It is also buyers' sole responsibility to warrant and guarantee that any intellectual property rights of a third party are not infringed upon when integrating Silergy products into any application. Silergy assumes no responsibility for any said applications or for any use of any circuitry other than circuitry entirely embodied in a Silergy product.
- 3. Limited warranty and liability.** Information furnished by Silergy in this document is believed to be accurate and reliable. However, Silergy makes no representation or warranty, expressed or implied, as to the accuracy or completeness of such information and shall have no liability for the consequences of use of such information. In no event shall Silergy be liable for any indirect, incidental, punitive, special or consequential damages, including but not limited to lost profits, lost savings, business interruption, costs related to the removal or replacement of any products or rework charges, whether or not such damages are based on tort or negligence, warranty, breach of contract or any other legal theory. Notwithstanding any damages that customer might incur for any reason whatsoever, Silergy's aggregate and cumulative liability towards customer for the products described herein shall be limited in accordance with the Standard Terms and Conditions of Sale of Silergy.
- 4. Suitability for use.** Customer acknowledges and agrees that it is solely responsible for compliance with all legal, regulatory and safety-related requirements concerning its products, and any use of Silergy components in its applications, notwithstanding any applications-related information or support that may be provided by Silergy. Silergy products are not designed, authorized or warranted to be suitable for use in life support, life-critical or safety-critical systems or equipment, nor in applications where failure or malfunction of an Silergy product can reasonably be expected to result in personal injury, death or severe property or environmental damage. Silergy assumes no liability for inclusion and/or use of Silergy products in such equipment or applications and therefore such inclusion and/or use is at the customer's own risk.
- 5. Terms and conditions of commercial sale.** Silergy products are sold subject to the standard terms and conditions of commercial sale, as published at <http://www.silergy.com/stdterms>, unless otherwise agreed in a valid written individual agreement specifically agreed to in writing by an authorized officer of Silergy. In case an individual agreement is concluded only the terms and conditions of the respective agreement shall apply. Silergy hereby expressly objects to and denies the application of any customer's general terms and conditions with regard to the purchase of Silergy products by the customer.
- 6. No offer to sell or license.** Nothing in this document may be interpreted or construed as an offer to sell products that is open for acceptance or the grant, conveyance or implication of any license under any copyrights, patents or other industrial or intellectual property rights. Silergy makes no representation or warranty that any license, either express or implied, is granted under any patent right, copyright, mask work right, or other intellectual property right. Information published by Silergy regarding third-party products or services does not constitute a license to use such products or services or a warranty or endorsement thereof. Use of such information may require a license from a third party under the patents or other intellectual property of the third party, or a license from Silergy under the patents or other intellectual property of Silergy.

For more information, please visit: [www.silergy.com](http://www.silergy.com)

© 2019 Silergy Corp.

All Rights Reserved.