

General Description

The SYCS108 is a family of high accuracy galvanically isolated Hall-effect current sensor ICs which typical bandwidth is 700 kHz. It uses non-contact differential Hall array internally for bidirectional or unidirectional currents sensing from 10A to 50A, and outputs the analog voltage proportional to the DC or AC current. Current is sensed differentially in order to reject external common-mode fields.

A precise, proportional output voltage is provided by the high accuracy, good linearity, low temperature drift Hall IC, which is programmed for accuracy at the factory.

The SYCS108 is available in a compact SOP8 package with low primary conductor resistance for power loss, which allows for easy implementation.

The SYCS108 is suitable for high frequency, insulation, small size with low heat generation applications, including automotive, industrial, and communications systems.

Features

- Hall open-loop linear differential current sensor
- 5V single supply
- Wide current sensing range:
 - Bidirectional: $\pm 10 \sim \pm 50A$
 - Unidirectional: 20 ~ 50A
- 700 kHz typical bandwidth, typical response time 1 μs
- UL 62368-1 Ed3 certified
 - Dielectric Strength Test Voltage = 2400V_{RMS}
 - Working Voltage for Basic Isolation = 297V_{RMS}
- Low primary conductor resistance for power loss
- Factory-trimmed for high accuracy
- Compact SOP8 Package

Applications

- EV/HEV charger and DC-DC power supply
- Photovoltaic inverter power supply and UPS
- Motor control and frequency converter
- Communication and server power supply

Typical Application

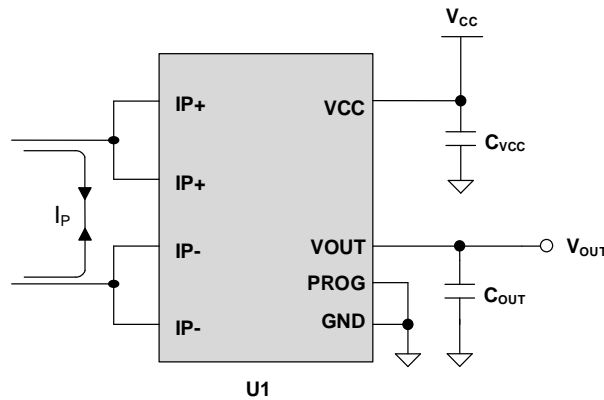


Figure 1. Typical Application Circuit

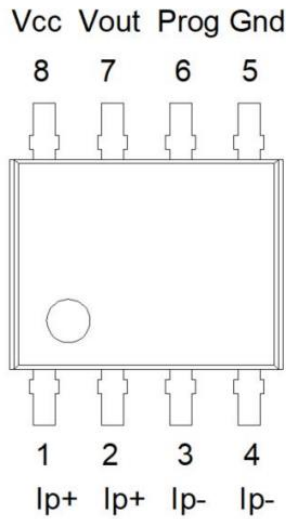


Ordering Information

Part Number	Architecture	I _p (A)	Sensitivity(mV/A)	V _{qvo} (V)	T _A (°C)
SYCS108K-010BR	Bidirectional	±10	200	V _{CC} /2	-40~125
SYCS108K-020BR	Bidirectional	±20	100	V _{CC} /2	-40~125
SYCS108K-030BR	Bidirectional	±30	66.7	V _{CC} /2	-40~125
SYCS108K-040BR	Bidirectional	±40	50	V _{CC} /2	-40~125
SYCS108K-050BR	Bidirectional	±50	40	V _{CC} /2	-40~125
SYCS108K-020UR	Unidirectional	20	200	V _{CC} /10	-40~125
SYCS108K-030UR	Unidirectional	30	133.3	V _{CC} /10	-40~125
SYCS108K-040UR	Unidirectional	40	100	V _{CC} /10	-40~125
SYCS108K-050UR	Unidirectional	50	80	V _{CC} /10	-40~125



Pinout (Top View)



SOP8

Pin Number	Pin Name	Pin Description
1,2,	IP+	Positive terminals for sensing current.
3,4	IP-	Negative terminals for sensing current.
5	GND	Ground pin.
6	PROG	Factory-trimmed pin. Connect this pin to GND.
7	VOUT	Analog output pin.
8	VCC	Power supply pin.

Block Diagram

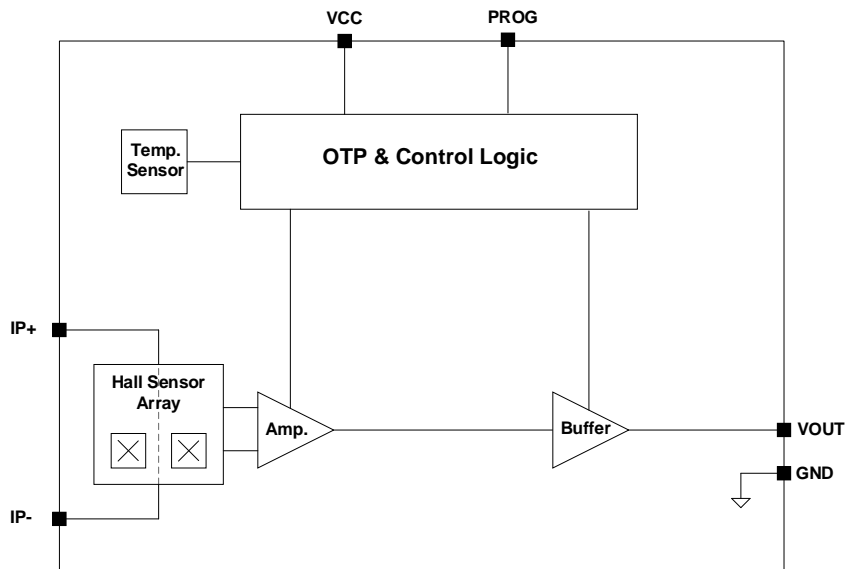


Figure 2. Block Diagram



Absolute Maximum Ratings (Note 1)

Supply Input Voltage ----- -0.3 to 6.5V
 PROG, VOUT ----- 0.15 to V_{CC}-0.15V
 Junction Temperature Range ----- -40 to 165°C
 Lead Temperature Range (Soldering, 10 sec.) ----- 260°C
 Storage Temperature Range ----- -55 to 150°C

Recommended Operating Conditions (Note 2)

Supply Input Voltage ----- 4.5 to 5.5V
 Ambient Temperature Range ----- -40 to 125°C

Isolation Characteristics

Characteristic	Symbol	Notes	Rating	Unit
Dielectric Strength Test Voltage (Note 3)	V _{ISO}	Agency type-tested for 60 seconds per UL standard 62368-1 Ed3	2400	V _{RMS}
Working Voltage for Basic Isolation	V _{WVBI}	For basic (single) isolation per UL standard 62368-1 Ed3	420	V _{PK}
			297	V _{RMS}
Clearance Distance	D _{CL}	Min distance from IP pin to signal pin(air)	4.2	mm
Creepage Distance	D _{CR}	Min distance from IP pin to signal pin (molded body)	4.2	mm

Electrical Characteristics

(V_{CC} = 5V, C_{VCC} = 0.1μF, T_A = -40 to 125°C, unless otherwise specified)

Parameter	Symbol	Test Conditions	Min	Typ.	Max	Unit
Supply Voltage	V _{CC}		4.75	5	5.25	V
Supply Current	I _{CC}	R _L ≥ 10kΩ		16		mA
Power on Delay Time	T _{POD}	T _A =25°C			1000	μs
Zero Current Output Voltage	V _{QVO}	SYCS-xxxBR, T _A = 25°C		V _{CC} /2		V
		SYCS-xxxUR, T _A = 25°C		V _{CC} /10		V
Output Voltage Range @I _P	V _{OUT} -V _{QVO}	SYCS-xxxBR, T _A = 25°C		±2		V
		SYCS-xxxUR, T _A = 25°C		4		V
Zero Current Output Ratiometry Error	E _{RAT}		-0.3		0.3	%
Output Load Resistance	R _L	V _{OUT} to V _{CC} or GND	5			kΩ
Output Load Capacitance	C _L	V _{OUT} to GND			10	nF
Response Time	t _{RES}	T _A =25°C, C _L =1nF		1		μs
Bandwidth	BW	Small signal -3dB, C _L =1nF, T _A =25°C		700		kHz
DC Output Impedance	R _{OUT}	T _A = 25°C			20	kΩ
Moisture Sensitivity Level	MSL			3		

Note 1: Stresses beyond the “Absolute Maximum Ratings” may cause permanent damage to the device. These are stress ratings only. Functional operation of the device at these or any other conditions beyond those indicated in the operational sections of the specification is not implied. Exposure to absolute maximum rating conditions for extended periods may affect device reliability.

Note 2: The device is not guaranteed to function outside its operating conditions.

Note 3: 60-second test is only for UL test; Tested in production against UL 62368-1 Ed3.



SYCS108K-010BR Performance Characteristics

(VCC = 5V, C_{VCC} = 0.1μF, T_A = -40 to 125°C, unless otherwise specified)

Parameter	Symbol	Condition	Min	Typ.	Max	Unit
Nominal Performance						
Current Sensing Range	I _P		-10		10	A
Sensitivity	Sens			200		mV/A
Zero Current Output Voltage	V _{QVO}	I _P =0A		V _{CC} /2		V
Accuracy Performance						
Sensitivity Error	E _{SENS}	T _A =25°C;	-1		1	%
Voltage Offset Error	V _{OE}	I _P =0A, T _A = 25°C	-10	±5	10	mV
		I _P =0A, T _A = -40 to 125°C	-30	±15	30	mV
Linearity Error	E _{LIN}	Full scale of I _P	-1	0.5	1	%
Total Output Error	E _{TOT, H}	Full scale of I _P , T _A = 25 to 125°C	-2		2	%
	E _{TOT, H2}	Full scale of I _P , T _A = 25 to 85°C	-1.5		1.5	%
	E _{TOT, L}	Full scale of I _P , T _A = -40 to 25°C		±3		%



SYCS108K-020BR Performance Characteristics

(VCC = 5V, C_{VCC} = 0.1μF, T_A = -40 to 125°C, unless otherwise specified)

Parameter	Symbol	Condition	Min	Typ.	Max	Unit
Nominal Performance						
Current Sensing Range	I _P		-20		20	A
Sensitivity	Sens			100		mV/A
Zero Current Output Voltage	V _{QVO}	I _P =0A		V _{CC} /2		V
Accuracy Performance						
Sensitivity Error	E _{SENS}	T _A =25°C;	-1		1	%
Voltage Offset Error	V _{OE}	I _P =0A, T _A = 25°C	-10	±5	10	mV
		I _P =0A, T _A = -40 to 125°C	-30	±15	30	mV
Linearity Error	E _{LIN}	Full scale of I _P	-1	0.5	1	%
Total Output Error	E _{TOT, H}	Full scale of I _P , T _A = 25 to 125°C	-2		2	%
	E _{TOT, H2}	Full scale of I _P , T _A = 25 to 85°C	-1.5		1.5	%
	E _{TOT, L}	Full scale of I _P , T _A = -40 to 25°C		±3		%

SYCS108K-020UR Performance Characteristics

(VCC = 5V, C_{VCC} = 0.1μF, T_A = -40 to 125°C, unless otherwise specified)

Parameter	Symbol	Condition	Min	Typ.	Max	Unit
Nominal Performance						
Current Sensing Range	I _P		0		20	A
Sensitivity	Sens			200		mV/A
Zero Current Output Voltage	V _{QVO}	I _P =0A		V _{CC} /10		V
Accuracy Performance						
Sensitivity Error	E _{SENS}	T _A =25°C;	-1		1	%
Voltage Offset Error	V _{OE}	I _P =0A, T _A = 25°C	-10	±5	10	mV
		I _P =0A, T _A = -40 to 125°C	-30	±15	30	mV
Linearity Error	E _{LIN}	Full scale of I _P	-1	0.5	1	%
Total Output Error	E _{TOT, H}	Full scale of I _P , T _A = 25 to 125°C	-2		2	%
	E _{TOT, H2}	Full scale of I _P , T _A = 25 to 85°C	-1.5		1.5	%
	E _{TOT, L}	Full scale of I _P , T _A = -40 to 25°C		±3		%



SYCS108K-030BR Performance Characteristics

(VCC = 5V, C_{VCC} = 0.1μF, T_A = -40 to 125°C, unless otherwise specified)

Parameter	Symbol	Condition	Min	Typ.	Max	Unit
Nominal Performance						
Current Sensing Range	I _P		-30		30	A
Sensitivity	Sens			66.7		mV/A
Zero Current Output Voltage	V _{QVO}	I _P =0A		V _{CC} /2		V
Accuracy Performance						
Sensitivity Error	E _{SENS}	T _A =25°C;	-1		1	%
Voltage Offset Error	V _{OE}	I _P =0A, T _A = 25°C	-10	±5	10	mV
		I _P =0A, T _A = -40 to 125°C	-30	±15	30	mV
Linearity Error	E _{LIN}	Full scale of I _P	-1	0.5	1	%
Total Output Error	E _{TOT, H}	Full scale of I _P , T _A = 25 to 125°C	-2		2	%
	E _{TOT, H2}	Full scale of I _P , T _A = 25 to 85°C	-1.5		1.5	%
	E _{TOT, L}	Full scale of I _P , T _A = -40 to 25°C		±3		%

SYCS108K-030UR Performance Characteristics

(VCC = 5V, C_{VCC} = 0.1μF, T_A = -40 to 125°C, unless otherwise specified)

Parameter	Symbol	Condition	Min	Typ.	Max	Unit
Nominal Performance						
Current Sensing Range	I _P		0		30	A
Sensitivity	Sens			133.3		mV/A
Zero Current Output Voltage	V _{QVO}	I _P =0A		V _{CC} /10		V
Accuracy Performance						
Sensitivity Error	E _{SENS}	T _A =25°C;	-1		1	%
Voltage Offset Error	V _{OE}	I _P =0A, T _A = 25°C	-10	±5	10	mV
		I _P =0A, T _A = -40 to 125°C	-30	±15	30	mV
Linearity Error	E _{LIN}	Full scale of I _P	-1	0.5	1	%
Total Output Error	E _{TOT, H}	Full scale of I _P , T _A = 25 to 125°C	-2		2	%
	E _{TOT, H2}	Full scale of I _P , T _A = 25 to 85°C	-1.5		1.5	%
	E _{TOT, L}	Full scale of I _P , T _A = -40 to 25°C		±3		%

SYCS108K-040BR Performance Characteristics

(VCC = 5V, C_{VCC} = 0.1μF, T_A = -40 to 125°C, unless otherwise specified)

Parameter	Symbol	Condition	Min	Typ.	Max	Unit
Nominal Performance						
Current Sensing Range	I _P		-40		40	A
Sensitivity	Sens			50		mV/A
Zero current output voltage	V _{QVO}	I _P =0A		V _{CC} /2		V
Accuracy Performance						
Sensitivity Error	E _{SENS}	T _A =25°C;	-1		1	%
Voltage Offset Error	V _{OE}	I _P =0A, T _A = 25°C	-10	±5	10	mV
		I _P =0A, T _A = -40 to 125°C	-30	±15	30	mV
Linearity Error	E _{LIN}	Full scale of I _P	-1	0.5	1	%
Total Output Error	E _{TOT, H}	Full scale of I _P , T _A = 25 to 125°C	-2		2	%
	E _{TOT, H2}	Full scale of I _P , T _A = 25 to 85°C	-1.5		1.5	%
	E _{TOT, L}	Full scale of I _P , T _A = -40 to 25°C		±3		%

SYCS108K-040UR Performance Characteristics

(VCC = 5V, C_{VCC} = 0.1μF, T_A = -40 to 125°C, unless otherwise specified)

Parameter	Symbol	Condition	Min	Typ.	Max	Unit
Nominal Performance						
Current Sensing Range	I _P		0		40	A
Sensitivity	Sens			100		mV/A
Zero Current Output Voltage	V _{QVO}	I _P =0A		V _{CC} /10		V
Accuracy Performance						
Sensitivity Error	E _{SENS}	T _A =25°C;	-1		1	%
Voltage Offset Error	V _{OE}	I _P =0A, T _A = 25°C	-10	±5	10	mV
		I _P =0A, T _A = -40 to 125°C	-30	±15	30	mV
Linearity Error	E _{LIN}	Full scale of I _P	-1	0.5	1	%
Total Output Error	E _{TOT, H}	Full scale of I _P , T _A = 25 to 125°C	-2		2	%
	E _{TOT, H2}	Full scale of I _P , T _A = 25 to 85°C	-1.5		1.5	%
	E _{TOT, L}	Full scale of I _P , T _A = -40 to 25°C		±3		%



SYCS108K-050BR Performance Characteristics

(VCC = 5V, C_{VCC} = 0.1μF, T_A = -40 to 125°C, unless otherwise specified)

Parameter	Symbol	Condition	Min	Typ.	Max	Unit
Nominal Performance						
Current Sensing Range	I _P		-50		50	A
Sensitivity	Sens			40		mV/A
Zero current output voltage	V _{QVO}	I _P =0A		V _{CC} /2		V
Accuracy Performance						
Sensitivity Error	E _{SENS}	T _A =25°C;	-1		1	%
Voltage Offset Error	V _{OE}	I _P =0A, T _A = 25°C	-10	±5	10	mV
		I _P =0A, T _A = -40 to 125°C	-30	±15	30	mV
Linearity Error	E _{LIN}	Full scale of I _P	-1	0.5	1	%
Total Output Error	E _{TOT, H}	Full scale of I _P , T _A = 25 to 125°C	-2		2	%
	E _{TOT, H2}	Full scale of I _P , T _A = 25 to 85°C	-1.5		1.5	%
	E _{TOT, L}	Full scale of I _P , T _A = -40 to 25°C		±3		%

SYCS108K-050UR Performance Characteristics

(VCC = 5V, C_{VCC} = 0.1μF, T_A = -40 to 125°C, unless otherwise specified)

Parameter	Symbol	Condition	Min	Typ.	Max	Unit
Nominal Performance						
Current Sensing Range	I _P		0		50	A
Sensitivity	Sens			80		mV/A
Zero Current Output Voltage	V _{QVO}	I _P =0A		V _{CC} /10		V
Accuracy Performance						
Sensitivity Error	E _{SENS}	T _A =25°C;	-1		1	%
Voltage Offset Error	V _{OE}	I _P =0A, T _A = 25°C	-10	±5	10	mV
		I _P =0A, T _A = -40 to 125°C	-30	±15	30	mV
Linearity Error	E _{LIN}	Full scale of I _P	-1	0.5	1	%
Total Output Error	E _{TOT, H}	Full scale of I _P , T _A = 25 to 125°C	-2		2	%
	E _{TOT, H2}	Full scale of I _P , T _A = 25 to 85°C	-1.5		1.5	%
	E _{TOT, L}	Full scale of I _P , T _A = -40 to 25°C		±3		%

Operation

The SYCS108 is a family of high accuracy galvanically isolated current sensor ICs. It offers various output modes for measuring bidirectional or unidirectional current from 10A to 50A, which output the analog voltage proportional to the AC or DC current. The typical bandwidth is 700 kHz.

The SYCS108 is available in a compact SOP8 package.

Application Information

Power Supply Capacitor (C_{VCC})

To minimize the potential noise, place a typical X5R or better grade ceramic capacitor as close to the IN and GND pins as possible. In this case, a 100nF or higher low ESR ceramic capacitor is recommended.

Output Capacitor (C_{OUT})

The output capacitor is selected to handle the output noise requirements. An X5R or better grade ceramic capacitor close to the V_{OUT} and GND pins can work well. To achieve better filtering results, a resistor (R_{OUT}) can be added.

The values of C_{OUT} and R_{OUT} are depended on the application. For most applications, a 1nF ceramic capacitor can operate well. The maximum equivalent output load capacitance value cannot be greater than C_L.

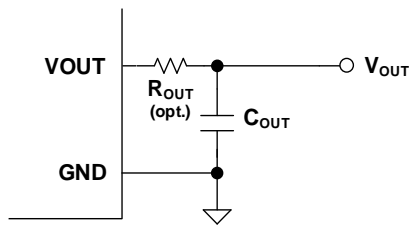


Figure 3. Output Capacitor

Sensitivity (Sens)

Sensitivity is the slope of the reference output voltage line, which refers to the output voltage (V_{OUT}) change with the input primary current (I_P) change. V_{QVO} is the quiescent voltage output.

$$V_{OUT} = V_{QVO} + Sens \times I_P$$

Sensitivity Error (E_{SENS})

The sensitivity error (E_{SENS}) is the relative deviation (%) of the sensitivity.

$$E_{SENS} = \frac{Sens_M - Sens_{TYP}}{Sens_{TYP}} \times 100 \text{ (%)}$$

Response Time (t_{RES})

Response time (t_{RES}) is defined as the time delay from t₁ to t₂ as shown below. Here t₁ and t₂ are the moments when the input primary current (I_P) and output voltage (V_{OUT}) reach 90%, respectively.

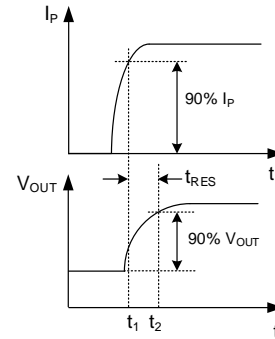


Figure 4. Response Time

Quiescent Voltage Output (V_{QVO})

The quiescent voltage output (V_{QVO}) is the output voltage with zero input primary current (I_P=0A), which is related to the V_{CC}.

For the bidirectional current sensor IC,

$$V_{QVO} = \frac{1}{2} \times V_{CC}$$

For the unidirectional current sensor IC,

$$V_{QVO} = \frac{1}{10} \times V_{CC}$$

Voltage Offset Error (V_{OE})

The voltage offset error (VOE) is the error of the quiescent voltage output (V_{QVO}) caused by the non-magnetic reasons, such as the noise of the hall component and the internal operational amplifier itself.

Zero Current Output Ratiometric Error (E_{RAT})

When the supply voltage V_{CC} changes from the typical value (V_{CC, TYP}) to V_{CC, MIN} < V_{CC, M} < V_{CC, MAX} there will be a certain deviation between the measured zero current output (V_{QVO, M}) and its ideal value (V_{QVO, TYP}), which is defined as follows:

$$E_{RAT} = \left(1 - \frac{V_{QVO, M}}{V_{CC, M}} \times \frac{V_{CC, TYP}}{V_{QVO, TYP}}\right) \times 100\%$$

Linearity Error (E_{LIN})

The linearity error (E_{LIN}) is the maximum positive or negative error between the measured output voltage and the ideal value within the sensing range.

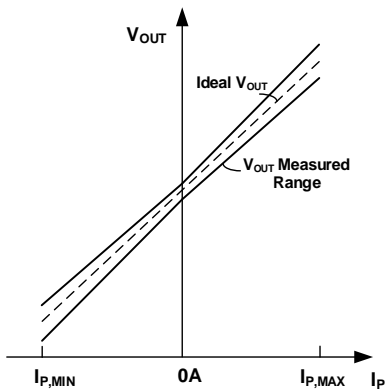


Figure 5. Linearity Error

Total Output Error (E_{TOT})

The total output error (E_{TOT}) is the error of the output voltage divided by the maximum output dynamic range. The relationship is shown as below:

$$E_{TOT} = \frac{V_{OUT,M} - V_{OUT,TYP}}{Sens_{TYP} \times I_{P,MAX}} \times 100\%$$

Where, V_{OUT, M} is the measured output voltage of hall current sensor; V_{OUT, TYP} is the ideal output voltage as shown below; The maximum input current (I_{P, MAX}) multiplied by the ideal sensitivity (Sens_{TYP}) is the maximum output dynamic range.

$$V_{OUT,TYP} = V_{QVO,TYP} + Sens_{TYP} \times I_P$$

The main factors causing total output errors (E_{TOT}) at high and low currents are sensitivity error (E_{SENS}) and voltage offset error (V_{OE}), respectively.

Layout Design

The layout design of the SYCS108 is relatively simple. For the best performance, the attention should be paid to heat dissipation and traces.

1. It is best to place C_{VCC} and C_{OUT} close to the IC to achieve better filtering performance.
2. It is best practice for the current to approach the IC parallel to the current-carrying pins, and for the current-carrying trace to not creep towards the center

of the package.

3. In some practical application, if there is an instantaneous pulse peak of more than 6.5V on the VCC pin, it is recommended to install a TVS (Transient Voltage Suppressor) diode between VCC pin and GND pin to absorb the spike energy.
4. It is important to implement proper current path planning, as this constitutes a critical measure for effective magnetic interference suppression. The recommended PCB layout is as below. In terms of details, for better performance, it is recommended to use PCB with minimum 2-ounce copper foil, at least 4-layer board, and place thermal vias near primary current pins.

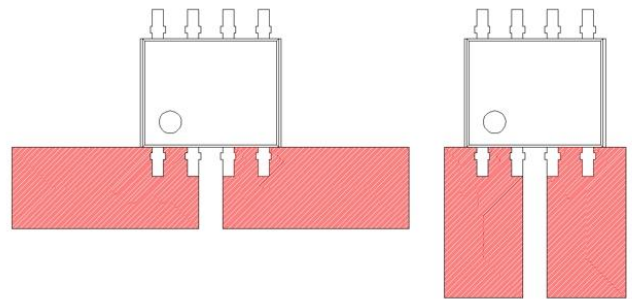


Figure 6. Recommended PCB Layout

Bad PCB layout will degrade isolation performance. The following design is NOT recommended.

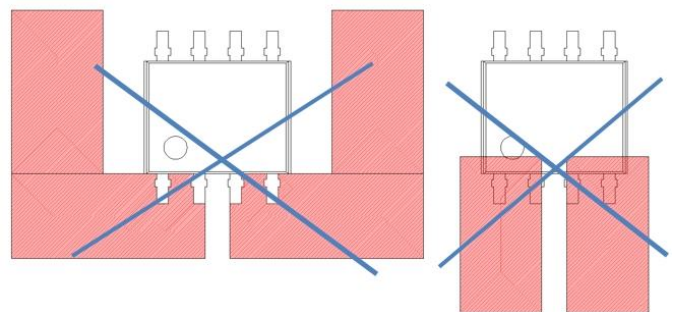
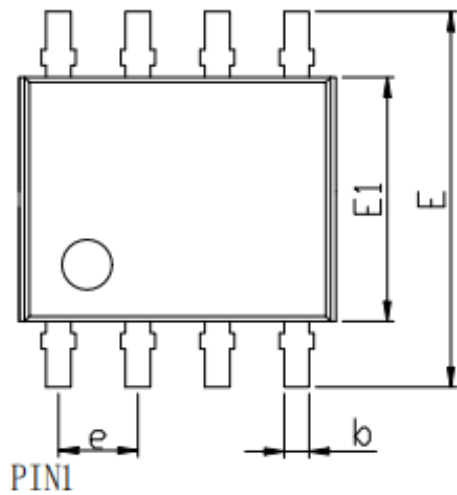
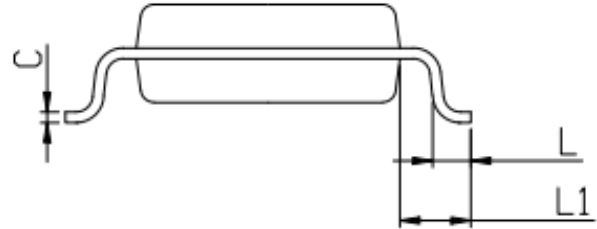
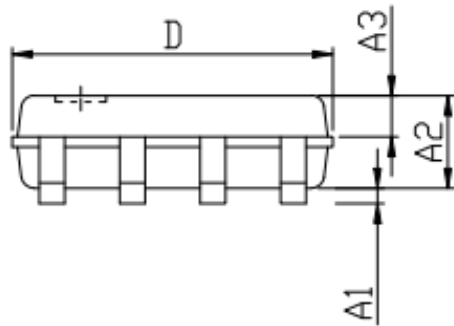


Figure 7. Not Recommended PCB Layout

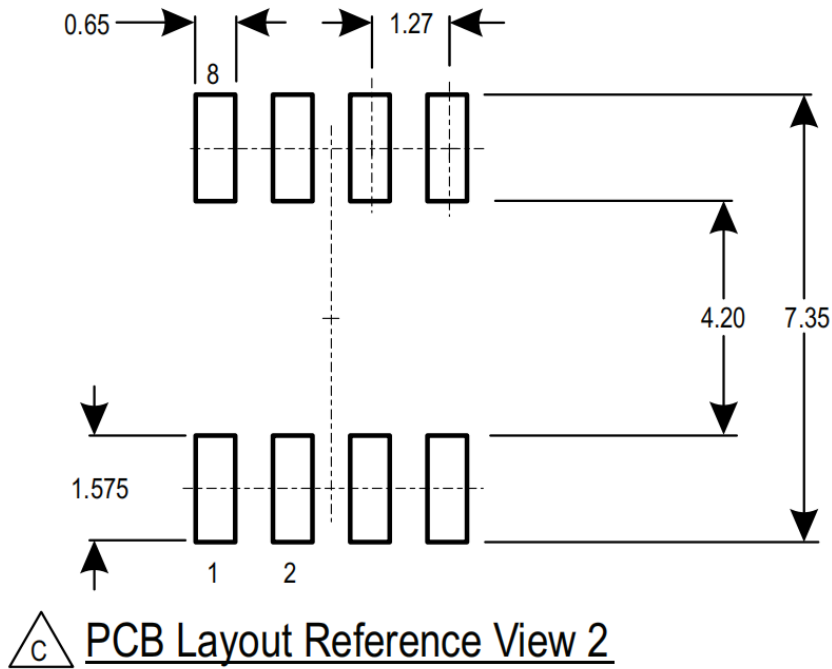
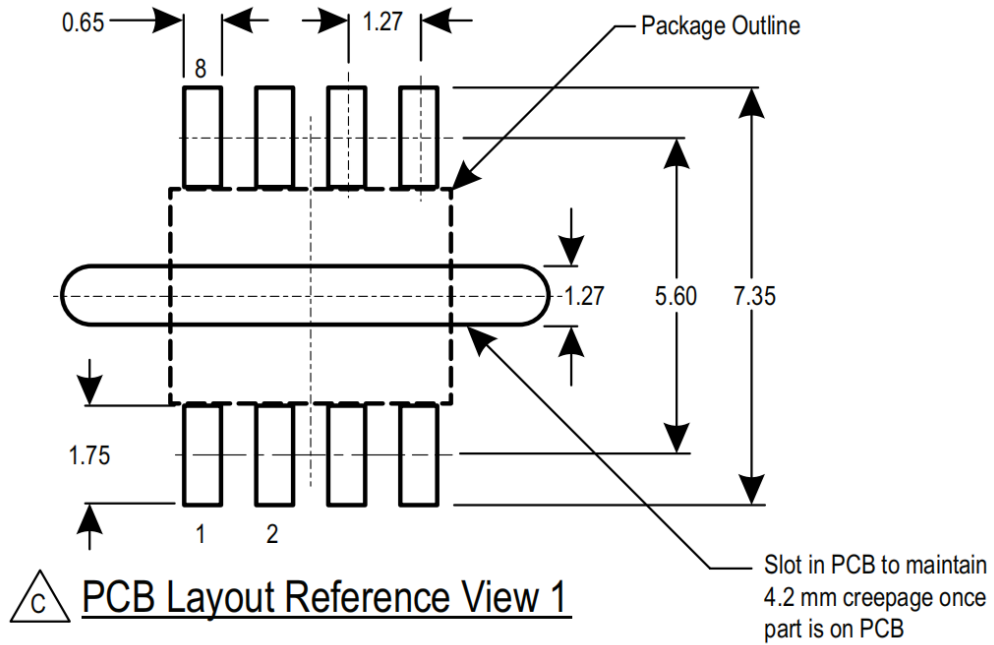
Package Outline & PCB Layout Design



SYMBOL	MILLIMETER		
	MIN	NOM	MAX
A1	0.00	0.05	0.10
A2	1.35	1.45	1.55
A3	0.65	0.70	0.75
b	0.35	0.40	0.45
c	0.18	0.20	0.22
D	4.70	4.90	5.10
E	5.80	6.00	6.20
E1	3.80	3.90	4.00
e	-	1.27TYP	-
L	0.40	0.60	0.8
L1	-	1.05REF	-

Notes: All dimension in millimeter and exclude mold flash & metal burr.

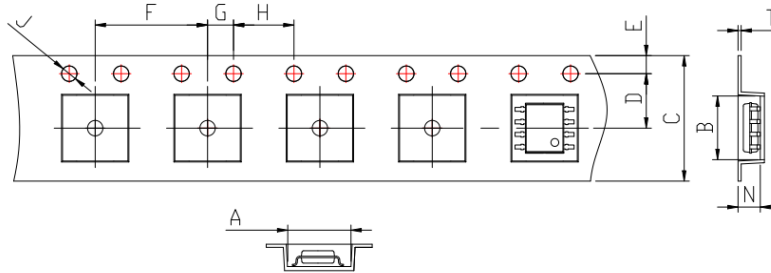
Recommended PCB Layout Design



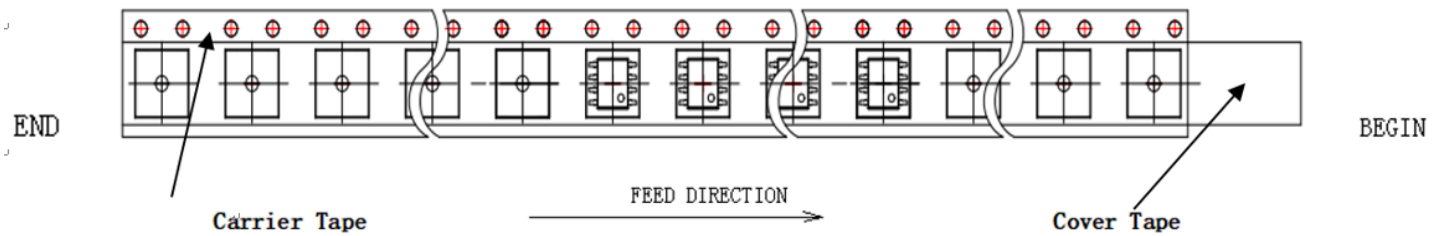
For PCB assemblies that cannot support a slotted design, the above stretched footprint may be used.

Tape and Reel Information

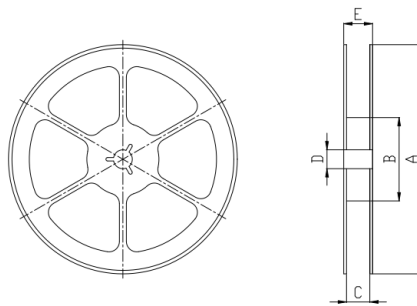
Tape Dimensions and Orientation



Dimension(mm)													
A	B	C	D	E	F	G	H	J	K	N	T	10-P	
6.5	5.35	12	5.5	1.75	8	2	4	1.6	2.10	-	0.22	40	



Reel Dimensions



Dimension(mm)					Qty Per Reel (pcs)
A	B	C	D	E	
Φ180	Φ60	13	Φ13	17	1000

Storage Conditions

1. We suggest that the element must be stored at an appropriate temperature 5 ~ 40°C and Relative humidity 40 ~ 60%RH.
2. Please keep the element away from the following circumstance: (Because store the products under the following circumstance, will cause appearance damage, characteristic defectiveness and inferior assembly etc)
 - 1) Under high temperature, high humidity circumstance for long time
 - 2) With corrosive gas, oxidation gas, acidity / alkalinity circumstance.
 - 3) dusty circumstance
3. Long-term storage may result in poor lead solderability and degraded electrical performance.
4. After unpacking, it should be stored in a dry environment with a relative humidity of less than 60% and a temperature controlled between 5°C and 30°C. It is recommended to complete welding within 168 hours after unpacking. If it exceeds 168 hours, it is recommended to re bake before use or repackage.

Soldering Conditions

Suggestion conditions for soldering to PCB:

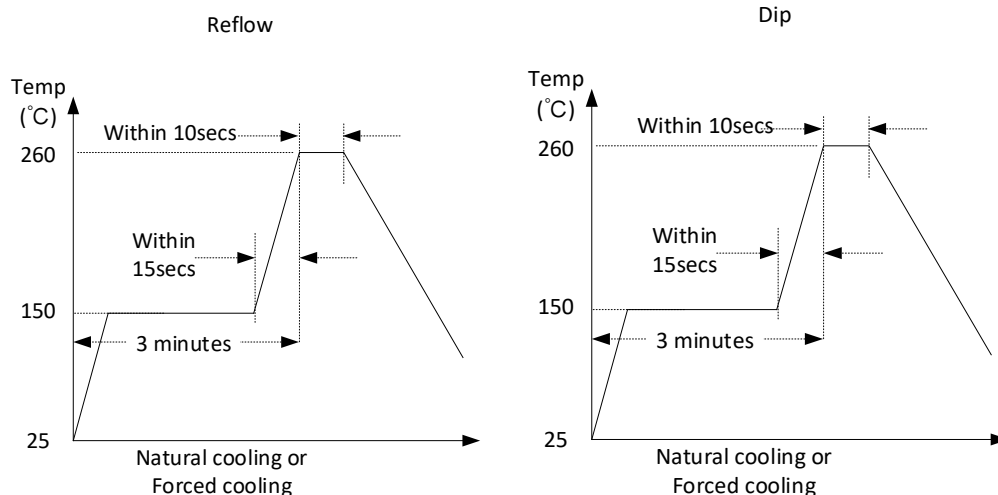
- 1) Avoid rapid heating, rapid cooling.
- 2) Preheat at temperature 130~150°C for 2~3 minutes.
- 3) Best condition of soldering (For example reflow): at 230~250°C for 3~5 secs.

Soldering method and Guarantee temperature

1) Soldering Method

Method	Method Description	Temperature
Reflow soldering	Soldering at high temperature environment	MAX260°C within 10secs
Dip soldering	Soldering at dipping solder sink	MAX260°C within 10secs
Hand soldering	Soldering lead of element by searing-iron	MAX350°C within 3secs

2) Guarantee Temperature Range



Guarantee Value (at Max. temperature)

Method	Reflow	Dip
Temperature	260°C	260°C
Time	10 seconds	10 seconds



Revision History

The revision history provided is for informational purposes only and is believed to be accurate; however, not warranted. Please make sure that you have the latest revision.

Revision Number	Revision Date	Description	Pages changed
1.0	Mar. 24, 2025	Initial Release	

IMPORTANT NOTICE

1. **Right to make changes.** Silergy and its subsidiaries (hereafter Silergy) reserve the right to change any information published in this document, including but not limited to circuitry, specification and/or product design, manufacturing or descriptions, at any time and without notice. This document supersedes and replaces all information supplied prior to the publication hereof. Buyers should obtain the latest relevant information before placing orders and should verify that such information is current and complete. All semiconductor products are sold subject to Silergy's standard terms and conditions of sale.
2. **Applications.** Application examples that are described herein for any of these products are for illustrative purposes only. Silergy makes no representation or warranty that such applications will be suitable for the specified use without further testing or modification. Buyers are responsible for the design and operation of their applications and products using Silergy products. Silergy or its subsidiaries assume no liability for any application assistance or designs of customer products. It is customer's sole responsibility to determine whether the Silergy product is suitable and fit for the customer's applications and products planned. To minimize the risks associated with customer's products and applications, customer should provide adequate design and operating safeguards. Customer represents and agrees that it has all the necessary expertise to create and implement safeguards which anticipate dangerous consequences of failures, monitor failures and their consequences, lessen the likelihood of failures that might cause harm and take appropriate remedial actions. Silergy assumes no liability related to any default, damage, costs or problem in the customer's applications or products, or the application or use by customer's third-party buyers. Customer will fully indemnify Silergy, its subsidiaries, and their representatives against any damages arising out of the use of any Silergy components in safety-critical applications. It is also buyers' sole responsibility to warrant and guarantee that any intellectual property rights of a third party are not infringed upon when integrating Silergy products into any application. Silergy assumes no responsibility for any said applications or for any use of any circuitry other than circuitry entirely embodied in a Silergy product.
3. **Limited warranty and liability.** Information furnished by Silergy in this document is believed to be accurate and reliable. However, Silergy makes no representation or warranty, expressed or implied, as to the accuracy or completeness of such information and shall have no liability for the consequences of use of such information. In no event shall Silergy be liable for any indirect, incidental, punitive, special or consequential damages, including but not limited to lost profits, lost savings, business interruption, costs related to the removal or replacement of any products or rework charges, whether or not such damages are based on tort or negligence, warranty, breach of contract or any other legal theory. Notwithstanding any damages that customer might incur for any reason whatsoever, Silergy' aggregate and cumulative liability towards customer for the products described herein shall be limited in accordance with the Standard Terms and Conditions of Sale of Silergy.
4. **Suitability for use.** Customer acknowledges and agrees that it is solely responsible for compliance with all legal, regulatory and safety-related requirements concerning its products, and any use of Silergy components in its applications, notwithstanding any applications-related information or support that may be provided by Silergy. Silergy products are not designed, authorized or warranted to be suitable for use in life support, life-critical or safety-critical systems or equipment, nor in applications where failure or malfunction of a Silergy product can reasonably be expected to result in personal injury, death or severe property or environmental damage. Silergy assumes no liability for inclusion and/or use of Silergy products in such equipment or applications and therefore such inclusion and/or use is at the customer's own risk.
5. **Terms and conditions of commercial sale.** Silergy products are sold subject to the standard terms and conditions of commercial sale, as published at <http://www.silergy.com>, unless otherwise agreed in a valid written individual agreement specifically agreed to in writing by an authorized officer of Silergy. In case an individual agreement is concluded only the terms and conditions of the respective agreement shall apply. Silergy hereby expressly objects to and denies the application of any customer's general terms and conditions with regard to the purchase of Silergy products by the customer.
6. **No offer to sell or license.** Nothing in this document may be interpreted or construed as an offer to sell products that is open for acceptance or the grant, conveyance or implication of any license under any copyrights, patents or other industrial or intellectual property rights. Silergy makes no representation or warranty that any license, either express or implied, is granted under any patent right, copyright, mask work right, or other intellectual property right. Information published by Silergy regarding third-party products or services does not constitute a license to use such products or services or a warranty or endorsement thereof. Use of such information may require a license from a third party under the patents or other intellectual property of the third party, or a license from Silergy under the patents or other intellectual property of Silergy.

For more information, please visit: www.silergy.com

© 2025 Silergy Corp.

All Rights Reserved.