

### General Description

The SY22603A is an adaptive linear current regulator that is designed to eliminate low frequency current ripple. It is intended for LED lighting applications, particularly those with single-stage LED drivers. The device acts as a ripple current filter for the LED load. It operates using adaptive control and requires a minimal number of external components.

The part can deliver up to 1.2A output current over a wide output voltage range from 20V to 65V. It uses a proprietary scheme to reduce the power loss and increase the overall efficiency. Multiple devices can operate in parallel to support higher LED current.

The SY22603A provides reliable open/short-LED and over temperature protections.

The SY22603A is available in a compact TO252-3 package.

### Features

- Current Filter for Single-Stage LED Driver to Eliminate Current Ripple
- 20V to 65V Output Voltage Range
- Operating Current: 91 $\mu$ A (typ.)
- 0.25A to 1.2A Output Current Range
- Proprietary Scheme for Low Power Loss (2.5% or less)
- Open-LED and Short-LED Protections
- Over temperature Protection
- RoHS-Compliant and Halogen-Free
- Compact Package: TO252-3

### Applications

- LED lighting

### Typical Application

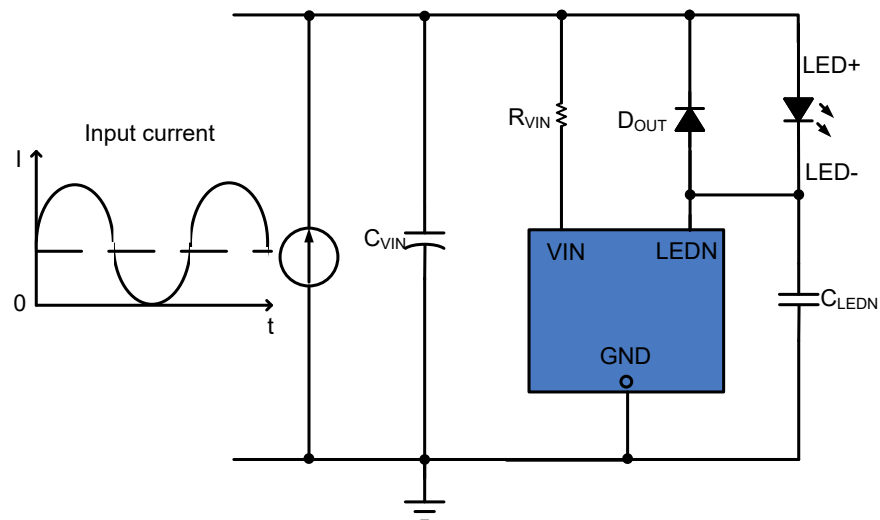


Figure 1. Schematic Diagram

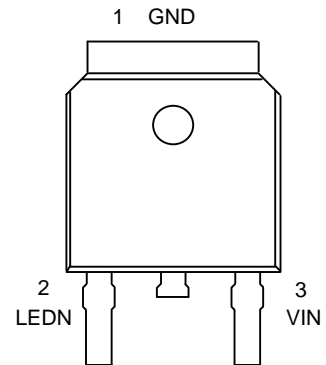
## Ordering Information

SY22603□(□□)□  
 □ Temperature Code  
 □□ Package Code  
 □ Optional Spec Code

Ordering Part Number	Package Type	Top Mark
SY22603AJAC	TO252-3 RoHS-Compliant and Halogen-Free	<b>BUAxyz</b>

*x = year code, y = week code, z = lot number code*

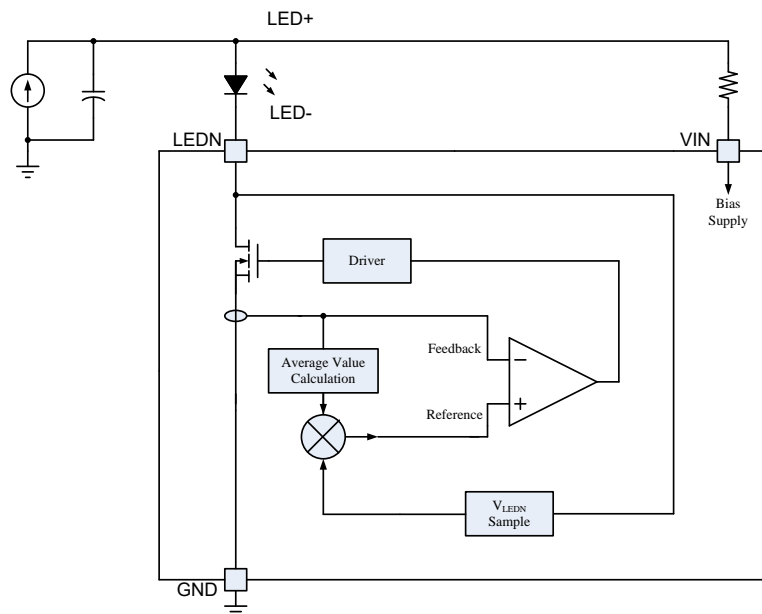
## Pinout (top view)



## Pin Description

Pin Number	Pin Name	Pin Description
1	GND	Ground pin
2	LEDN	Cathode of LED string
3	VIN	Power supply

## Block Diagram



## Absolute Maximum Ratings

Parameter (Note 1)	Min	Max	Unit
V <sub>IN</sub>	-0.3	60	V
LEDN	-0.3	65	
Lead Temperature (Soldering, 10s)		260	°C
Junction Temperature, Operating	-40	150	
Storage Temperature	-65	150	

## Thermal Information

Parameter (Note 2)	Typ	Unit
θ <sub>JA</sub> Junction-to-Ambient Thermal Resistance	50	°C/W
θ <sub>JC</sub> Junction-to-Case Thermal Resistance	4.5	
P <sub>D</sub> Power Dissipation T <sub>A</sub> = 25°C	2.5	W

## Recommended Operating Conditions

Parameter	Min	Max	Unit
V <sub>IN</sub>	20	60	V
LEDN	-0.3	65	V

## Electrical Characteristics

(V<sub>IN</sub> = 2.4V, T<sub>A</sub> = 25°C unless otherwise specified.)

Parameter	Symbol	Test Conditions	Min	Typ	Max	Unit	
Power Supply	V <sub>IN</sub> Minimum Operating Voltage	V <sub>VIN_MIN</sub>		20		V	
	V <sub>IN</sub> Maximum Operating Voltage	V <sub>VIN_MAX</sub>		60		V	
	V <sub>IN</sub> Turn-On Threshold	V <sub>VIN_ON</sub>		2.9	3.4	4.1	V
	V <sub>IN</sub> Turn-Off Threshold	V <sub>VIN_OFF</sub>		2.7	3.2	3.9	V
	V <sub>IN</sub> Operating Current	I <sub>VIN</sub>		70	91	120	μA
LEDN Current	LEDN Minimum Operating Current	I <sub>LEDN_MIN</sub>		250		mA	
	LEDN Maximum Operating Current	I <sub>LEDN_MAX</sub>		1200		mA	
LEDN Voltage	High Voltage Protection	V <sub>LEDN_HV</sub>	4.3	4.85	5.3	V	
	Overvoltage Protection	V <sub>LEDN_OV</sub>	12.3	14	15.7	V	
BV	V <sub>BV</sub>	V <sub>IN</sub> = GND = 0V, LEDN = 250μA					
Thermal	Shutdown Temperature 1	T <sub>SD1</sub>	V <sub>LEDN</sub> < V <sub>LEDN_OV</sub>		150	°C	
	Shutdown Temperature 2	T <sub>SD2</sub>	V <sub>LEDN</sub> > V <sub>LEDN_OV</sub>		100	°C	
	Hysteresis Temperature	T <sub>HYS</sub>			20	°C	

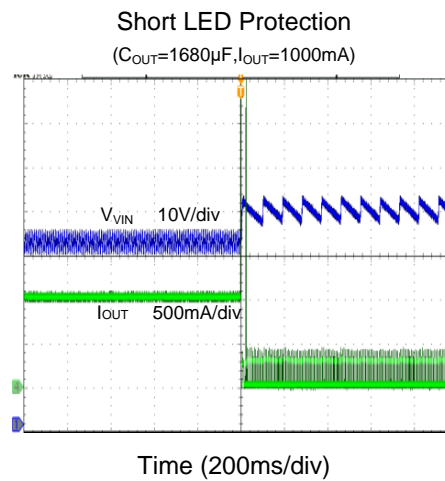
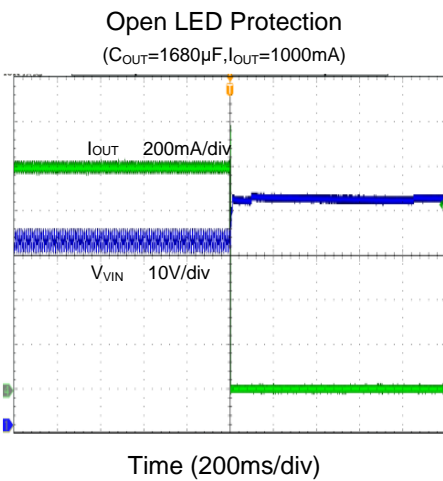
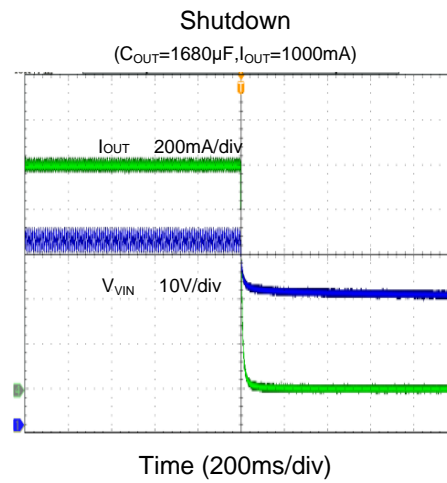
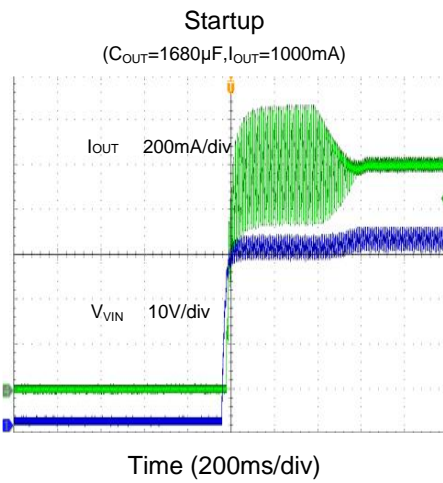
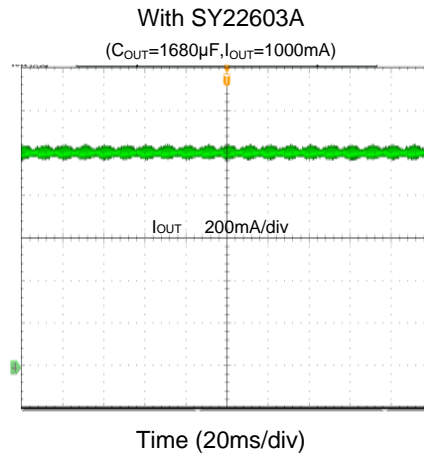
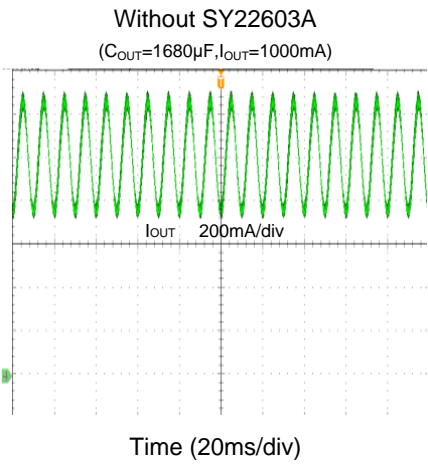
**Note 1:** Stresses beyond the “Absolute Maximum Ratings” may cause permanent damage to the device. These are stress ratings only. Functional operation of the device at these or any other conditions beyond those indicated in the operational sections of the specification is not implied. Exposure to absolute maximum rating conditions for extended periods may affect device reliability.

**Note 2:** θ<sub>JA</sub> is measured in the natural convection at T<sub>A</sub> = 25°C on a low effective single layer thermal conductivity test board of JEDEC 51-3 thermal measurement standard. Test condition: Device mounted on 2" x 2" FR-4 substrate PCB, 2oz copper, with minimum recommended pad on top layer and thermal vias to bottom layer ground plane.



## Typical Performance Characteristics

( $V_{IN} = 40V$ ,  $T_A = 25^\circ C$  unless otherwise specified)





## General Information

The SY22603A is an adaptive linear current regulator that is designed to eliminate low frequency current ripple going through an external load. It is intended for LED lighting applications, particularly single-stage LED drivers. The device acts as a ripple current filter for the load.

The device can deliver up to 1.2A output current over a wide output voltage range from 20V to 65V. It uses a proprietary scheme to reduce the power loss and increase efficiency. Multiple parts can be operated in parallel for applications requiring higher LED current.

Reliable open/short-LED protection (OLP/SLP) and overtemperature protection (OTP) are provided for ensuring reliable operation.

### Startup

The SY22603A begins operation when  $V_{VIN}$  exceeds  $V_{VIN\_ON}$ . There is an initial blanking time in which the current filter function is suppressed to allow the internal average current reference to start. After startup, the LED current ripple is gradually suppressed.

### Shutdown

When  $V_{VIN}$  falls below  $V_{VIN\_OFF}$ , the LEDN pin becomes high impedance with respect to the GND reference.

### Steady-State Operation

The LED current is sampled and processed inside the device. The average LED current value is taken as the reference to regulate the instantaneous current.  $V_{LEDN}$  is sensed simultaneously and kept low to reduce power loss. If the input/output experience transient voltages that causes  $V_{LEDN}$  to be higher than  $V_{LEDN\_HV}$ , the LED current ripple suppression will be reduced to enable  $V_{LEDN}$  fall quickly until  $V_{LEDN}$  is lower than  $V_{LEDN\_HV}$ . Therefore, the normal operating voltage for  $V_{LEDN}$  will be lower than  $V_{LEDN\_HV}$ .

### Input Capacitor $C_{VIN}$

The power loss on the chip is related to the input capacitor  $C_{VIN}$ . A larger  $C_{VIN}$  value reduces the power loss.

The input capacitor  $C_{VIN}$  are designed by rules below:

(a) Select an input capacitor  $C_{VIN}$ , making sure that the voltage on LEDN pin is lower than  $V_{LEDN\_HV}$ .

(b) Select  $C_{VIN}$  to obtain an optimal power loss  $P_{LEDN\_LOSS}$  and ensure that the power loss and the chip power dissipation are acceptable.

$$P_{LEDN\_LOSS} = V_{LEDN\_AVG} * I_{LED}$$

(c) If the  $C_{VIN}$  is not large enough to ensure that the power loss and thermal dissipation are acceptable, increase  $C_{VIN}$  and go back to step (b) and reiterate until conditions are met.

Note: The recommended input capacitor  $C_{VIN}$  value is dependent on the output current and PCB heat dissipation conditions. The relation between the LED current,  $P_{LOSS\_LEDN}$  and  $C_{VIN}$  is shown in Table 1.

Table 1. Input Capacitor  $C_{VIN}$  Value

$I_{LED}$ (mA)	$C_{VIN}$ ( $\mu$ F)	$V_{LEDN\_AVG}$ (V)	$P_{LEDN\_LOSS}$ (mW)
250	220	1.92	481
250	330	1.32	331
400	440	1.64	654
400	880	0.91	364
600	880	1.37	820
600	1320	1.01	603
800	1320	1.34	1071
800	1980	1.01	814
1000	1980	1.27	1272
1000	2470	1.113	1113

### Open LED and Recovery

When a LED is open, LED current and  $V_{LEDN}$  both naturally drop to zero, and the current filter function will shut down. When the LED is reconnected, the LED current is sensed and the device will resume normal operation.

### Short LED and Recovery

When an LED is shorted,  $V_{LEDN}$  is pulled high. If  $V_{LEDN}$  is higher than  $V_{LEDN\_OV}$ , the LED current will be limited and the thermal shutdown threshold is reduced to  $T_{SD2}$ .

When the output short is removed,  $V_{LEDN}$  is pulled down. If  $V_{LEDN}$  is lower than  $V_{LEDN\_OV}$ , the LED current limit is disabled and the thermal shutdown threshold is changed back to  $T_{SD1}$ .

When the LED output is shorted, the external diode  $D_{OUT}$  is used to avoid LEDN overshoot, typically caused by the parasitic inductance of the output wiring.



### Safety Test

The external  $D_{OUT}$ ,  $R_{VIN}$  and  $C_{LEDN}$  are used to protect the VIN/LEDN pins from overvoltage, especially for the ESD and Hi-Pot tests. The recommended values are  $D_{OUT}=1N4148$  or  $BAV21W$  (Fast recovery diode),  $R_{VIN} = 20K\Omega$  and  $C_{LEDN} = 100nF$ .

### Parallel Operation Application

Multiple SY22603A devices can operate in parallel to support higher LED current, as shown in Figure 2.

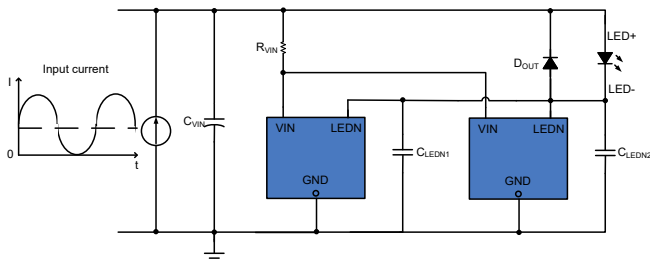


Figure 2. Parallel Circuit

### Layout

To achieve optimal design, follow these PCB layout considerations:

- $C_{LEDN}$  must be close to the pins LEDN and GND to protect the LEDN pin from overvoltage.
- The PCB copper area associated with GND pin and LEDN pin must be maximized to enhance heat dissipation.
- $C_{VIN}$  must be placed close to IC,  $D_{OUT}$  must be placed close to LEDN pin and  $C_{VIN}$  to reduce the impact of parasitic inductance on the circuit.

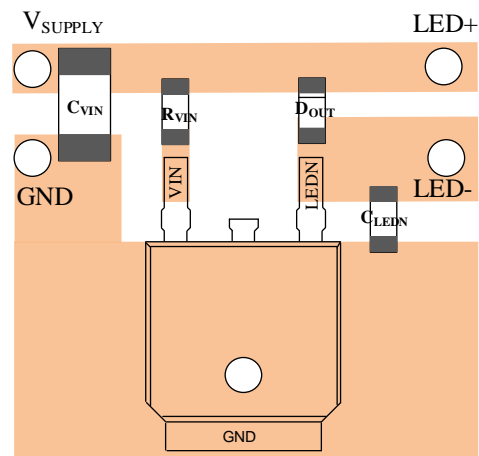
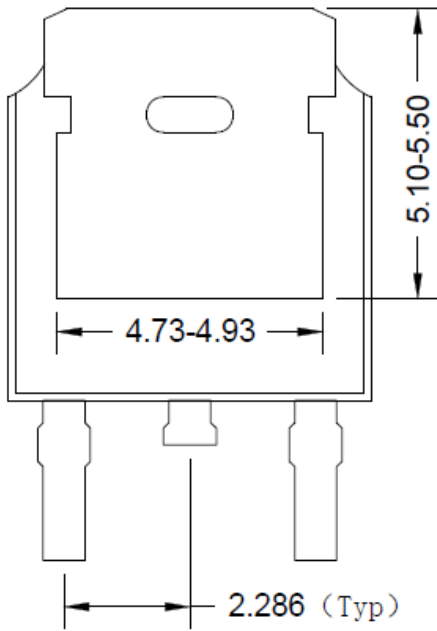
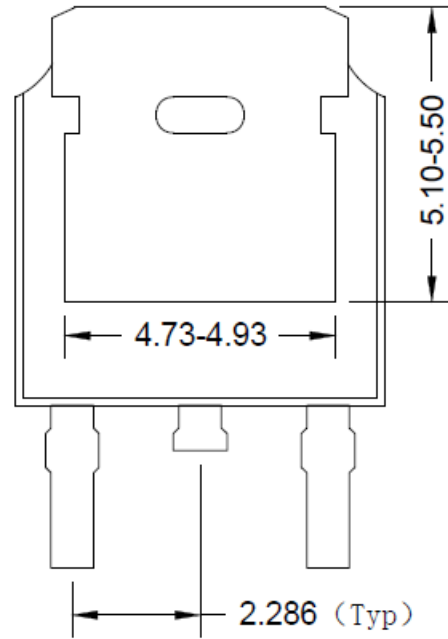


Figure 3. Recommend PCB Layout

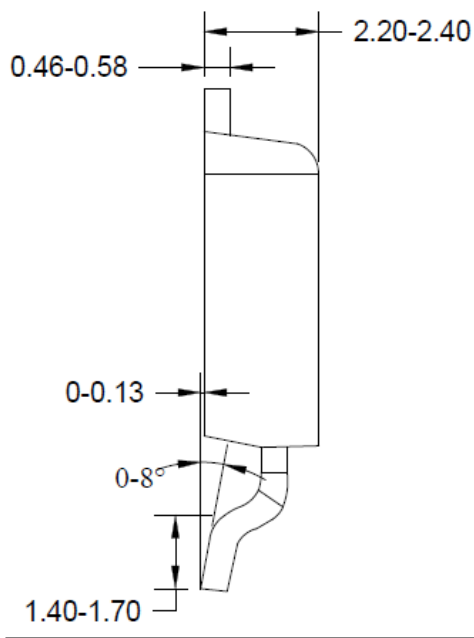
**TO252-3 Package Outline Drawing**



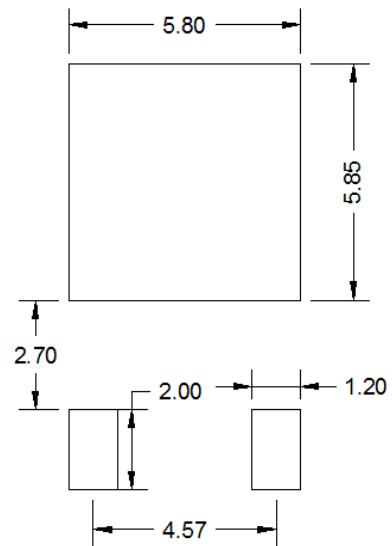
**Top view**



**Bottom view**



**Side view**

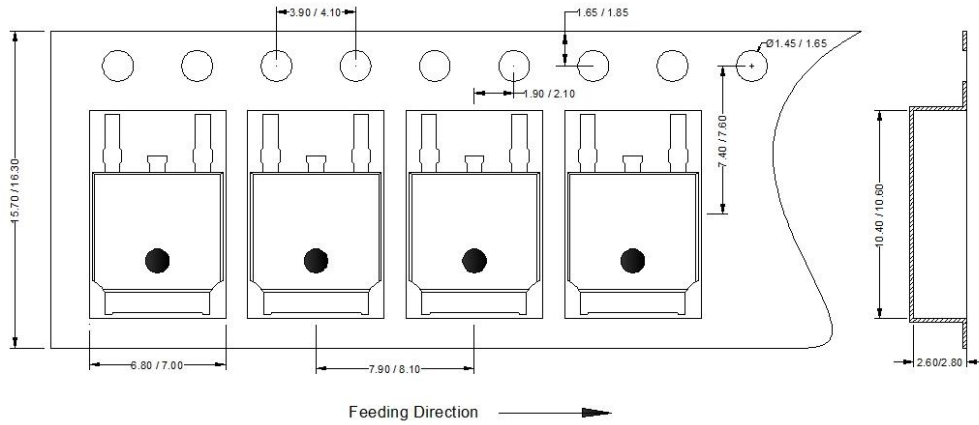


**Recommended pad layout (reference only)**

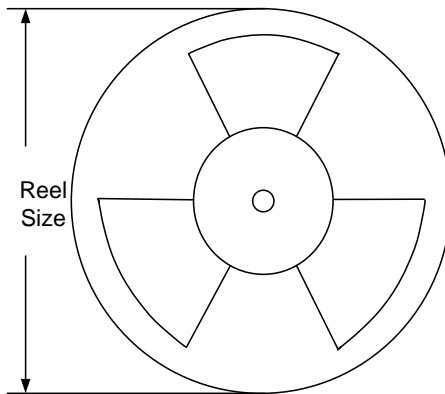
**Note:** All dimensions are in millimeters and exclude mold flash and metal burr.

**Taping and Reel Specification**

**TO252-3 taping orientation**



**Carrier tape and reel specification for packages**



Package type	Tape width (mm)	Pocket pitch(mm)	Reel size (Inch)	Trailer length(mm)	Leader length (mm)	Qty per reel (pcs)
TO-252-3	16	1.1	13"	400	400	2500

Others: NA



**IMPORTANT NOTICE**

- 1. Right to make changes.** Silergy and its subsidiaries (hereafter Silergy) reserve the right to change any information published in this document, including but not limited to circuitry, specification and/or product design, manufacturing or descriptions, at any time and without notice. This document supersedes and replaces all information supplied prior to the publication hereof. Buyers should obtain the latest relevant information before placing orders and should verify that such information is current and complete. All semiconductor products are sold subject to Silergy's standard terms and conditions of sale.
- 2. Applications.** Application examples that are described herein for any of these products are for illustrative purposes only. Silergy makes no representation or warranty that such applications will be suitable for the specified use without further testing or modification. Buyers are responsible for the design and operation of their applications and products using Silergy products. Silergy or its subsidiaries assume no liability for any application assistance or designs of customer products. It is customer's sole responsibility to determine whether the Silergy product is suitable and fit for the customer's applications and products planned. To minimize the risks associated with customer's products and applications, customer should provide adequate design and operating safeguards. Customer represents and agrees that it has all the necessary expertise to create and implement safeguards which anticipate dangerous consequences of failures, monitor failures and their consequences, lessen the likelihood of failures that might cause harm and take appropriate remedial actions. Silergy assumes no liability related to any default, damage, costs or problem in the customer's applications or products, or the application or use by customer's third-party buyers. Customer will fully indemnify Silergy, its subsidiaries, and their representatives against any damages arising out of the use of any Silergy components in safety-critical applications. It is also buyers' sole responsibility to warrant and guarantee that any intellectual property rights of a third party are not infringed upon when integrating Silergy products into any application. Silergy assumes no responsibility for any said applications or for any use of any circuitry other than circuitry entirely embodied in a Silergy product.
- 3. Limited warranty and liability.** Information furnished by Silergy in this document is believed to be accurate and reliable. However, Silergy makes no representation or warranty, expressed or implied, as to the accuracy or completeness of such information and shall have no liability for the consequences of use of such information. In no event shall Silergy be liable for any indirect, incidental, punitive, special or consequential damages, including but not limited to lost profits, lost savings, business interruption, costs related to the removal or replacement of any products or rework charges, whether or not such damages are based on tort or negligence, warranty, breach of contract or any other legal theory. Notwithstanding any damages that customer might incur for any reason whatsoever, Silergy' aggregate and cumulative liability towards customer for the products described herein shall be limited in accordance with the Standard Terms and Conditions of Sale of Silergy.
- 4. Suitability for use.** Customer acknowledges and agrees that it is solely responsible for compliance with all legal, regulatory and safety-related requirements concerning its products, and any use of Silergy components in its applications, notwithstanding any applications-related information or support that may be provided by Silergy. Silergy products are not designed, authorized or warranted to be suitable for use in life support, life-critical or safety-critical systems or equipment, nor in applications where failure or malfunction of an Silergy product can reasonably be expected to result in personal injury, death or severe property or environmental damage. Silergy assumes no liability for inclusion and/or use of Silergy products in such equipment or applications and therefore such inclusion and/or use is at the customer's own risk.
- 5. Terms and conditions of commercial sale.** Silergy products are sold subject to the standard terms and conditions of commercial sale, as published at <http://www.silergy.com/stdterms>, unless otherwise agreed in a valid written individual agreement specifically agreed to in writing by an authorized officer of Silergy. In case an individual agreement is concluded only the terms and conditions of the respective agreement shall apply. Silergy hereby expressly objects to and denies the application of any customer's general terms and conditions with regard to the purchase of Silergy products by the customer.
- 6. No offer to sell or license.** Nothing in this document may be interpreted or construed as an offer to sell products that is open for acceptance or the grant, conveyance or implication of any license under any copyrights, patents or other industrial or intellectual property rights. Silergy makes no representation or warranty that any license, either express or implied, is granted under any patent right, copyright, mask work right, or other intellectual property right. Information published by Silergy regarding third-party products or services does not constitute a license to use such products or services or a warranty or endorsement thereof. Use of such information may require a license from a third party under the patents or other intellectual property of the third party, or a license from Silergy under the patents or other intellectual property of Silergy.

For more information, please visit: [www.silergy.com](http://www.silergy.com)

© 2018 Silergy Corp.

**All Rights Reserved.**